

## Revision Record

Date	Version	Revision
2023/10/10	1.2.2.5	<ol style="list-style-type: none"> <li>1. Supported Memory traces: M1 ~ M4</li> <li>2. Math: supported 4 traces: F1~F4</li> <li>3. Decode: supported ARINC429</li> <li>4. Supported USB-GPIB adapter</li> <li>5. Fixed several bugs                             <ol style="list-style-type: none"> <li>a) Incorrect time after reboot when time zone = Europe/Rome</li> </ol> </li> </ol>
2022/9/5	1.2.1.1	<ol style="list-style-type: none"> <li>1. Math: filter supported</li> <li>2. Optimized knob acceleration</li> <li>3. Force trigger strategy changed</li> <li>4. Fixed several bugs                             <ol style="list-style-type: none"> <li>a) Scope gets confused about time zone and time</li> <li>b) Digital Channels display bug with &gt;5M memory</li> </ol> </li> </ol>
2022/7/19	1.2.0.2	Fixed some production issue. No functionality and performance difference between this release and 1.2.0.0. No need to upgrade to it if the version is already 1.2.0.0.
2022/4/26	1.2.0.0	<ol style="list-style-type: none"> <li>1. Acquire: Supported Fixed Sample Rate and Fixed Memory Length modes.</li> <li>2. Optimized mouse lagging</li> <li>3. Fixed several bugs                             <ol style="list-style-type: none"> <li>a) Digital Bus forgets position after reboot</li> <li>b) Digital Channel Trigger bug</li> <li>c) Digital channels show wrong data</li> <li>d) Pattern trigger "some sticking" with digital channels on</li> </ol> </li> </ol>
	1.1.8.0	1 <sup>st</sup> release

## Version Compatibility

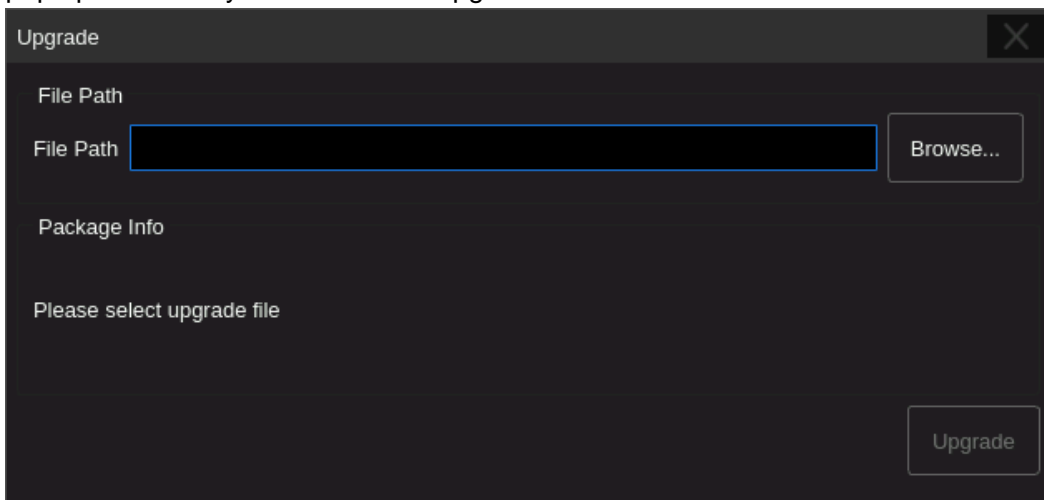
Source Version	Object Version	Compatibility
1.2.0.2	1.2.2.5	Tested
1.2.1.1	1.2.2.5	Tested
1.2.0.2	1.2.1.1	Tested
1.1.8.0	1.2.1.1	Tested
1.1.8.0	1.2.0.0	Tested

## Upgrade Instructions

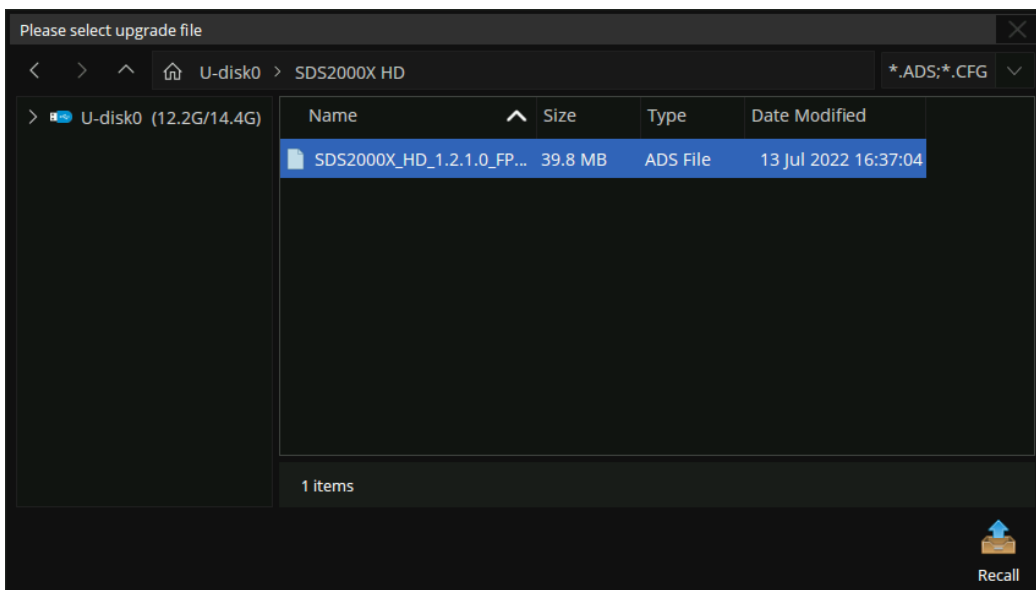
### Upgrade from a U-disk (USB Memory device)


**WARNING: DO NOT shut off the instrument until the update is completed.**

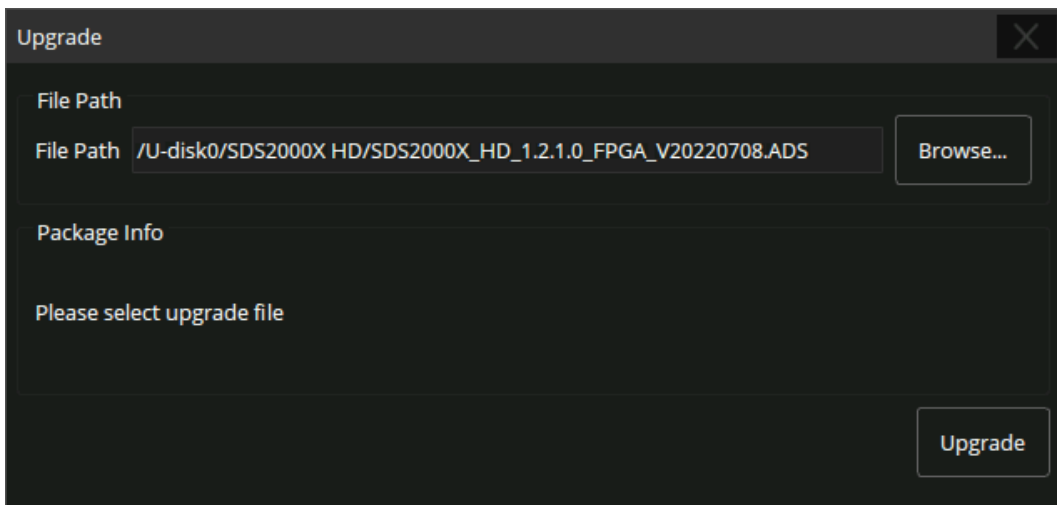
1. Copy the update file (\*.ads) to a FLASH type U-disk, and then insert the U-disk into one of the USB host ports of the instrument.
2. Perform " *Utility* -> *Menu* -> *Maintenance* -> *Upgrade*". The following the menu should pop up and allow you to select the upgrade file



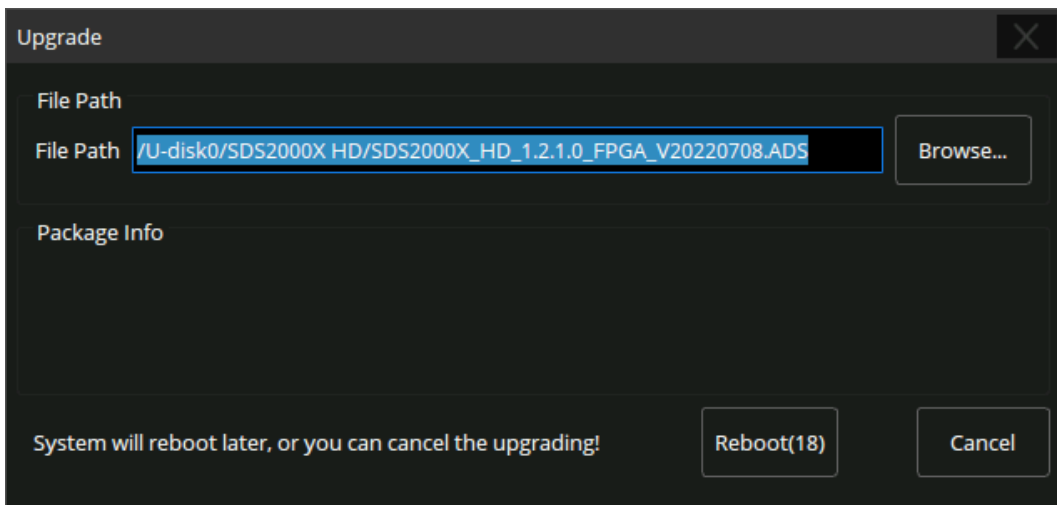
3. Click *Browse* in the menu above, and then select the correct update file (\*.ads) in the pop-up resource manager



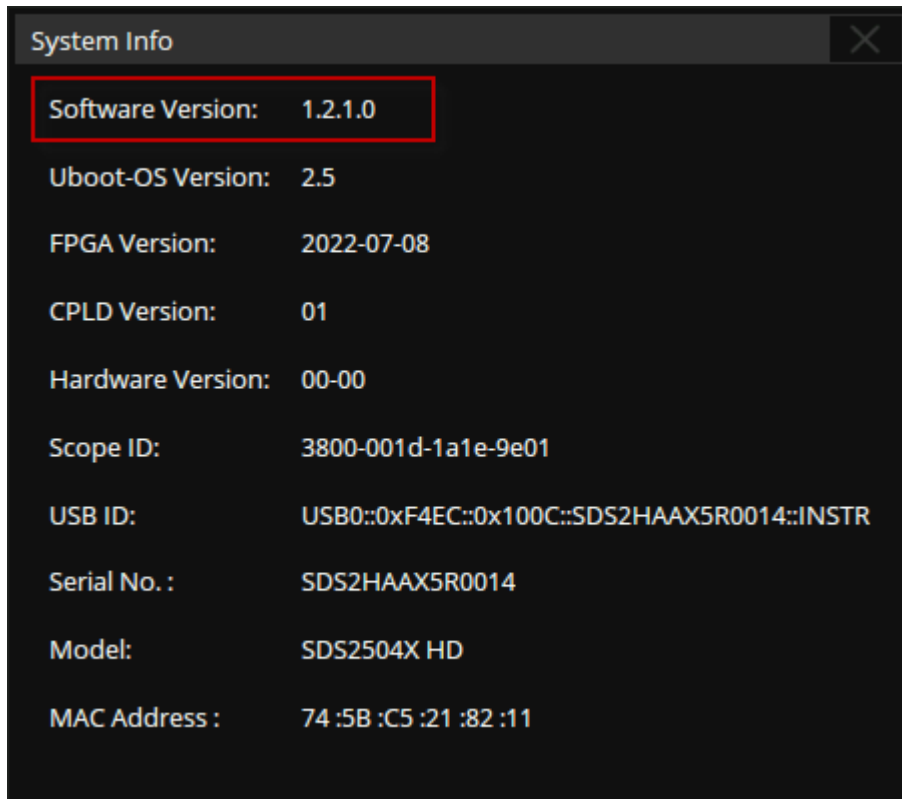
4. Click the recall icon  in the interface above and return to the upgrade dialog. Click **Upgrade** to perform the upgrade operation:



5. The system will first copy and verify the upgrade package. After the upgrade package is validated, the following interface will appear. Click **Reboot** to continue the upgrade, or click **Cancel** to cancel it.



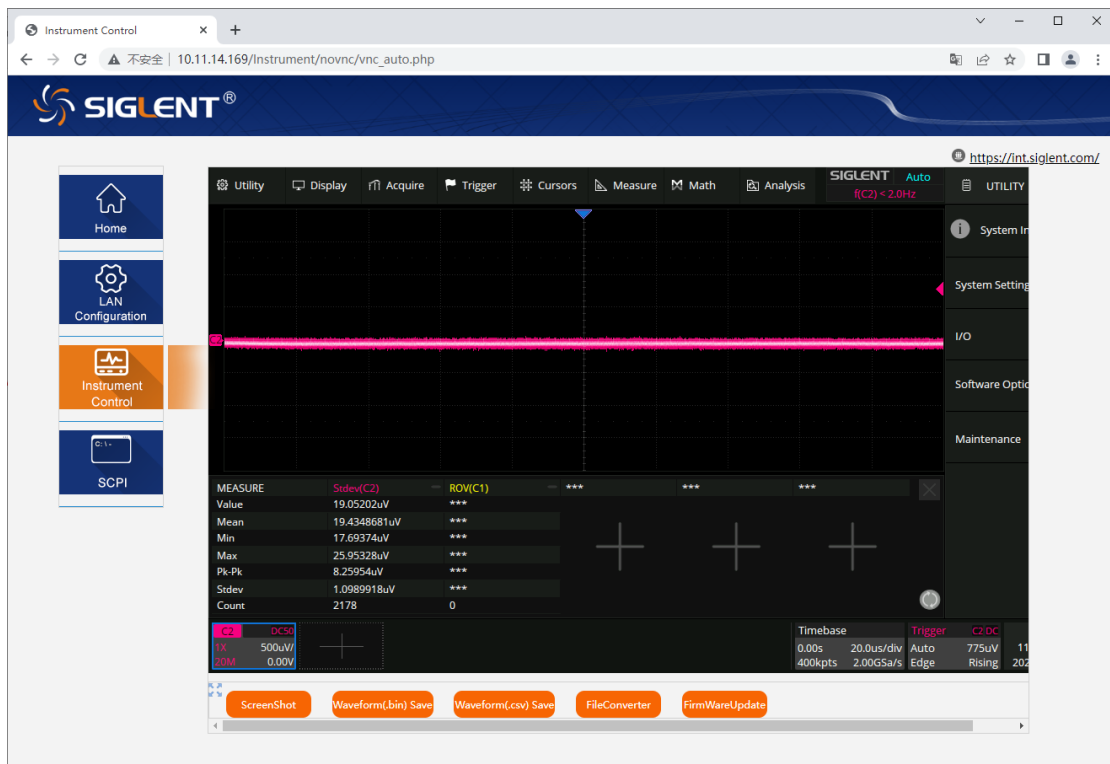
6. After the instrument reboots, check the version number through the steps **Utility** -> **Menu** -> **System Info** to confirm if the upgrade is successful.



**WARNING: DO NOT shut off the instrument until the update is completed.**

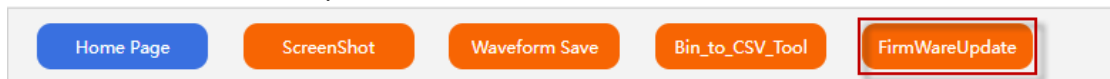
## Upgrade from the Web Server

A built-in web server provides an approach to control the instrument by web browser. This process doesn't require any additional software to be installed on the controlling computer. Set the LAN port correctly (see the User Manual for details), input the IP address of the instrument in the browser address bar, and then the user can browse and control the instrument on the web.



**WARNING: DO NOT shut off the instrument until the update is completed.**

1. Click the "FirmwareUpdate" button in the web interface



2. Select the correct update file (\*.ads) stored on the computer. The instrument will automatically download the update file and perform the upgrade once the file is specified.

**WARNING: DO NOT shut off the instrument until the update is completed.**