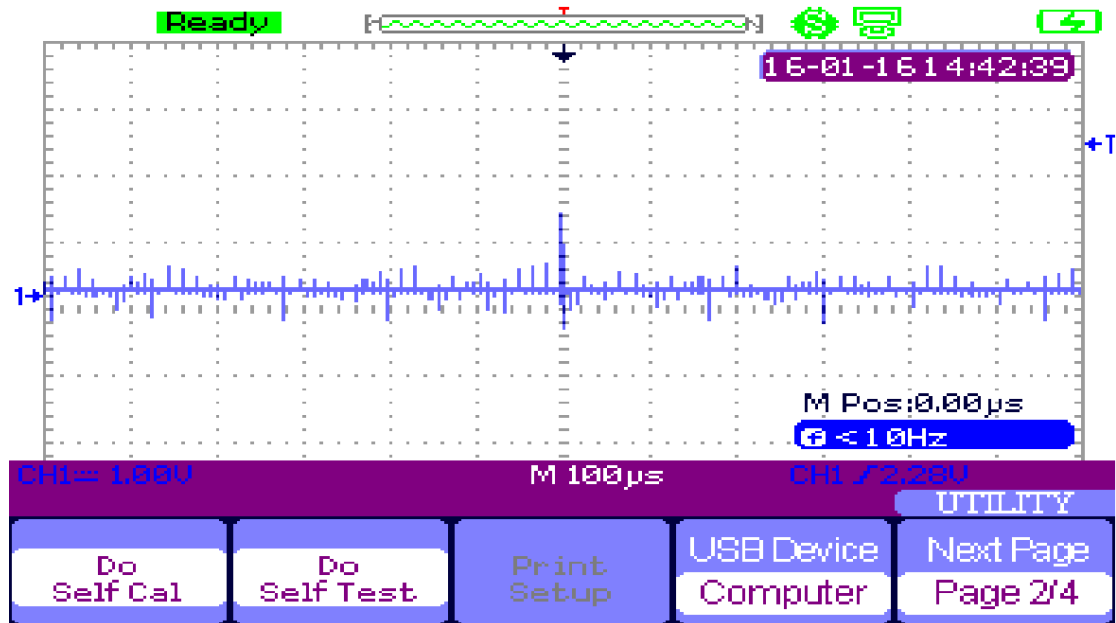


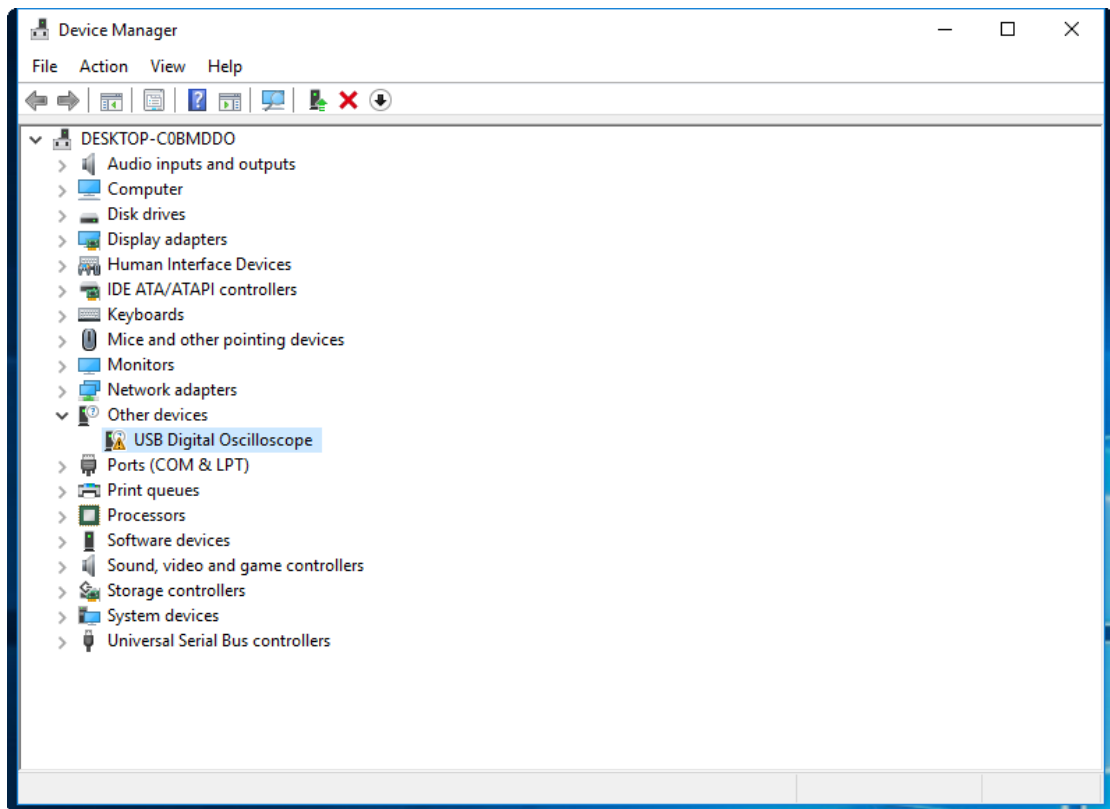
# How to Install the USB Driver for SHS800

## 1. Win10 64bit

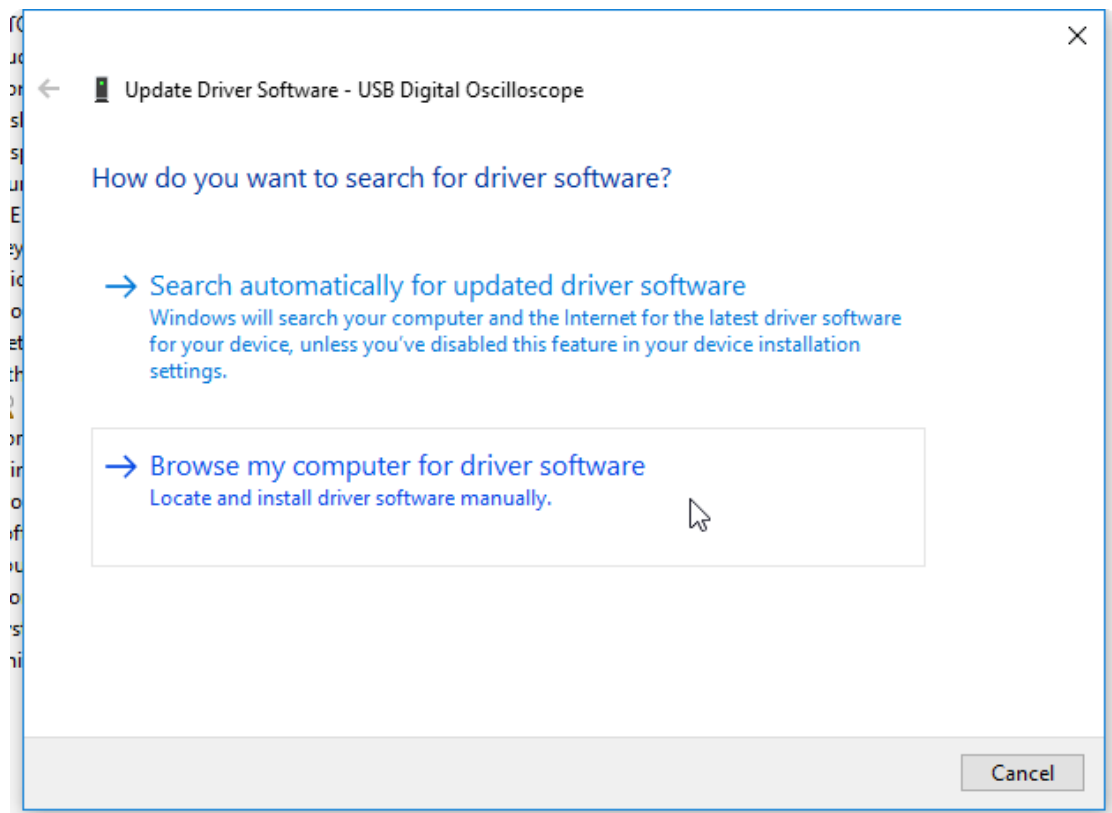
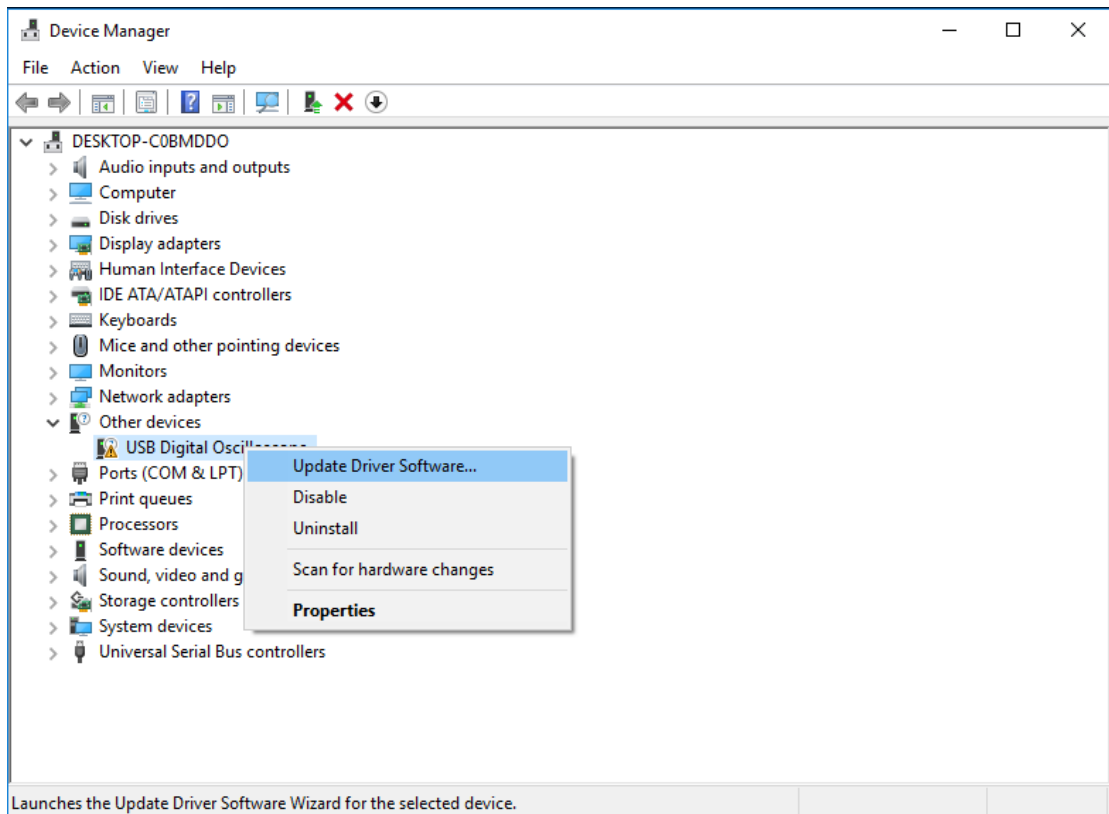
Turn on the device, set the USB Device option to "Computer", as shown below:

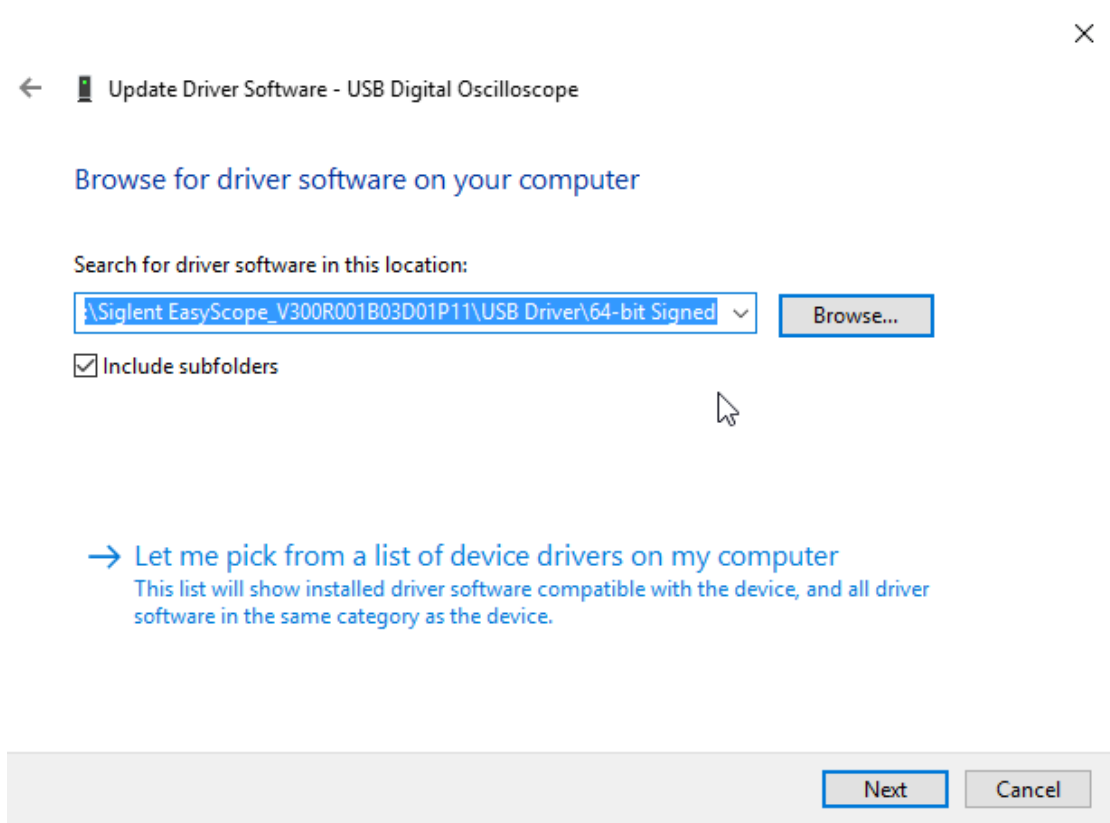


Then connect the device to PC with USB cable. Open the Device Manager, you can see the USB Digital Oscilloscope:

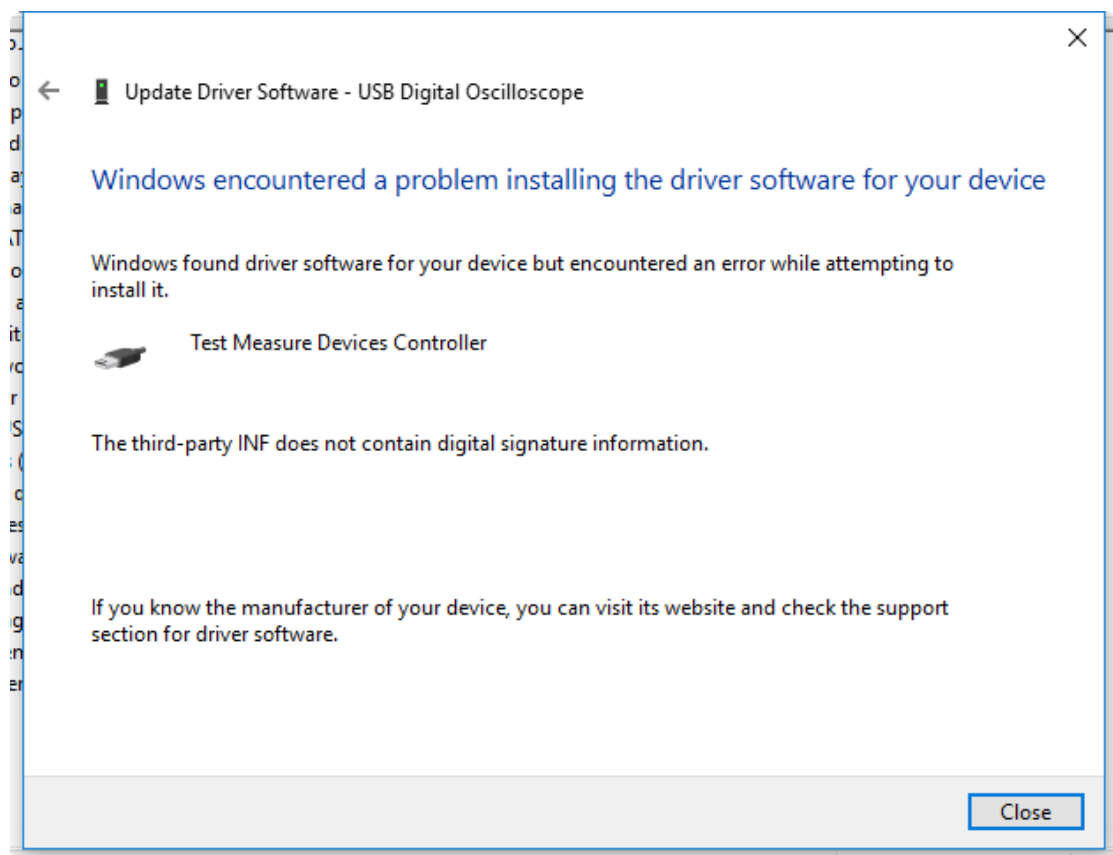


Right click it, click “Update Driver Software”, as shown below:





If you haven't disabled driver signature enforcement, you will see the error below:

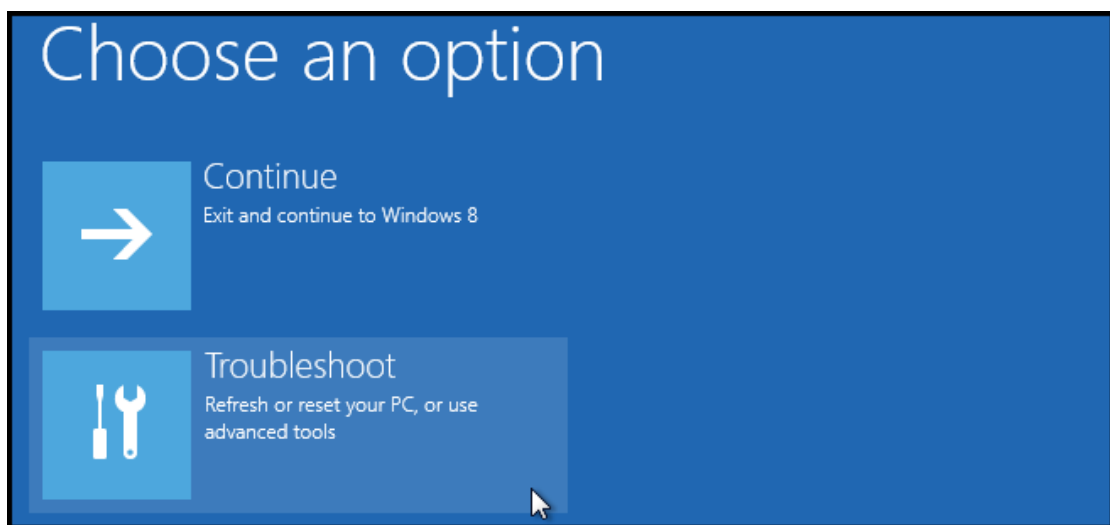


To disable driver signature enforcement, we need to get into the Troubleshooting options from the boot manager.

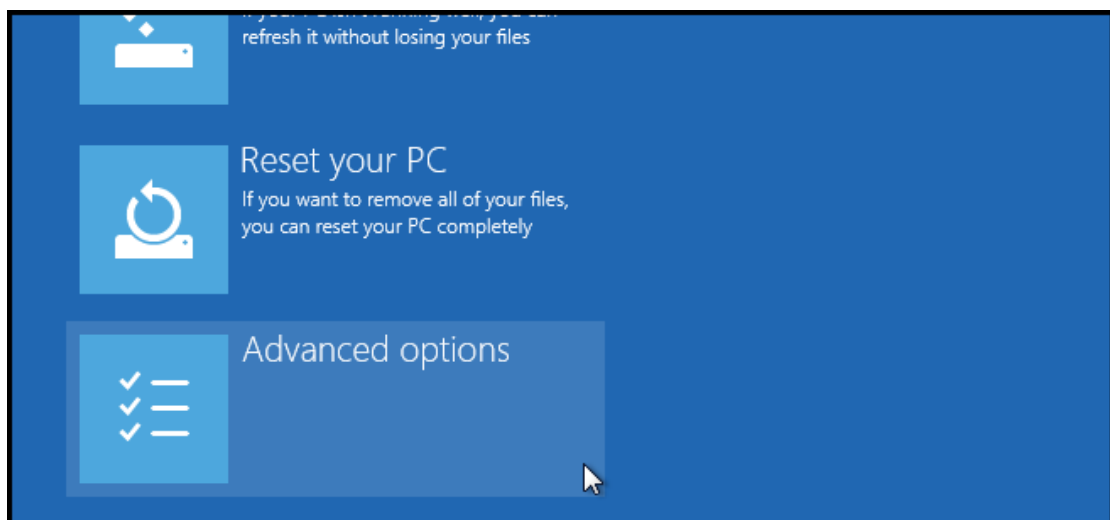
Hold down the SHIFT key while you click Restart.



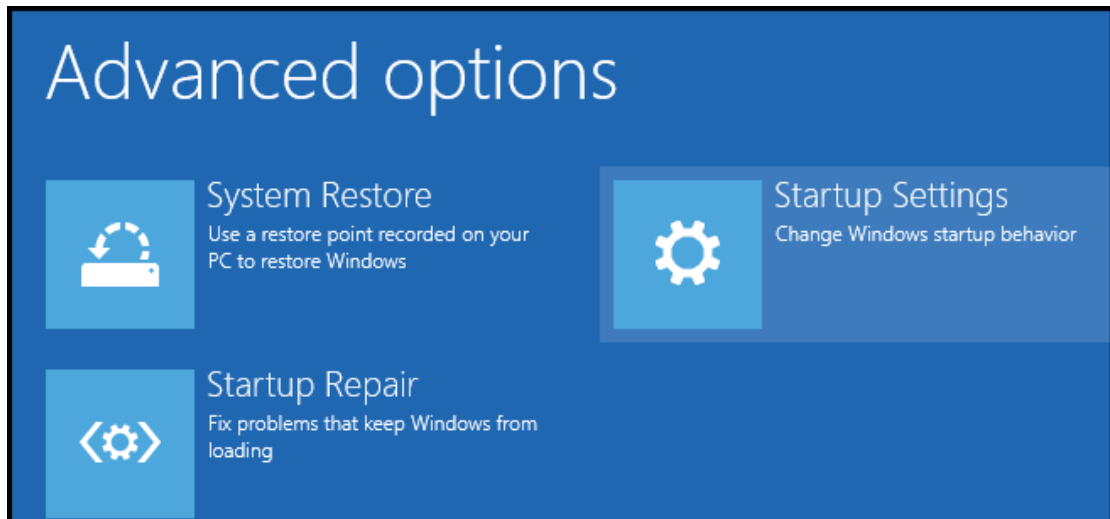
Choose the Troubleshoot option



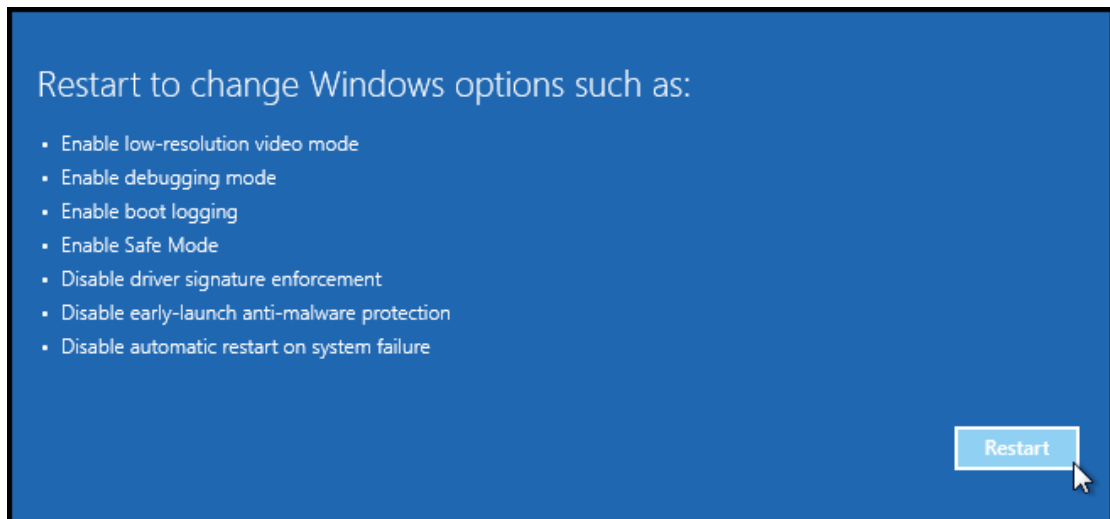
Then choose Advanced options.



Then Startup Settings.



Then restart the computer.



Finally, you will be given a list of startup settings that you can change. The one we are looking for is "Disable driver signature enforcement". To choose the setting, you will need to press the F7.

# Startup Settings

Press a number to choose from the options below:

Use number keys or functions keys F1-F9.

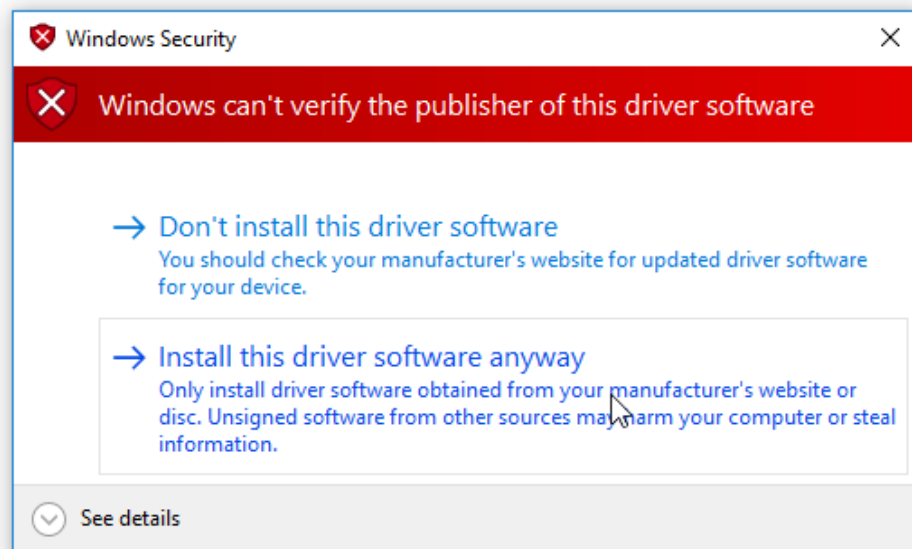
- 1) Enable debugging
- 2) Enable boot logging
- 3) Enable low-resolution video
- 4) Enable Safe Mode
- 5) Enable Safe Mode with Networking
- 6) Enable Safe Mode with Command Prompt
- 7) Disable driver signature enforcement
- 8) Disable early launch anti-malware protection
- 9) Disable automatic restart after failure

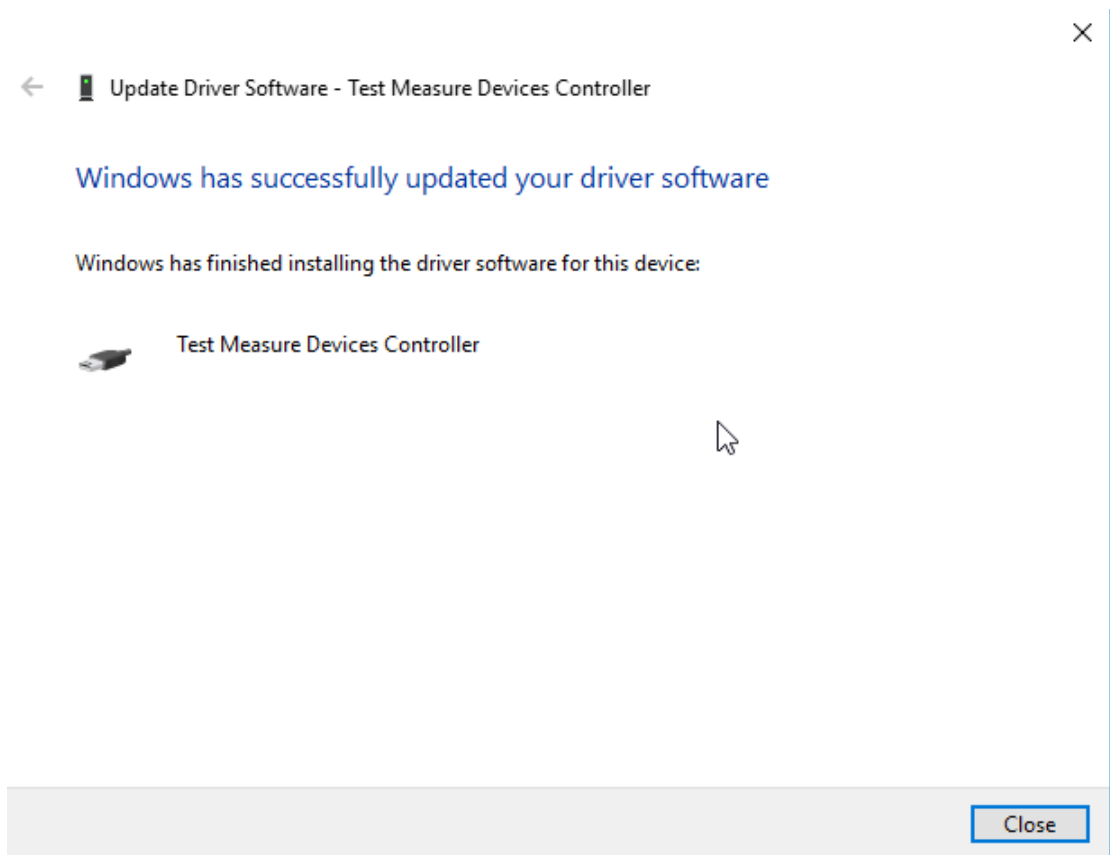
You will be able to install unsigned drivers without any error message.

When installing driver software, click the "Install this driver software anyway" option.

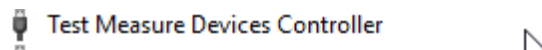
← Update Driver Software - USB Digital Oscilloscope

Installing driver software...





After successfully install the USB driver, you will see the “Test Measure Devices Controller” in Device Manager.



Now you can open the EasyScope, click the “Connect” button.

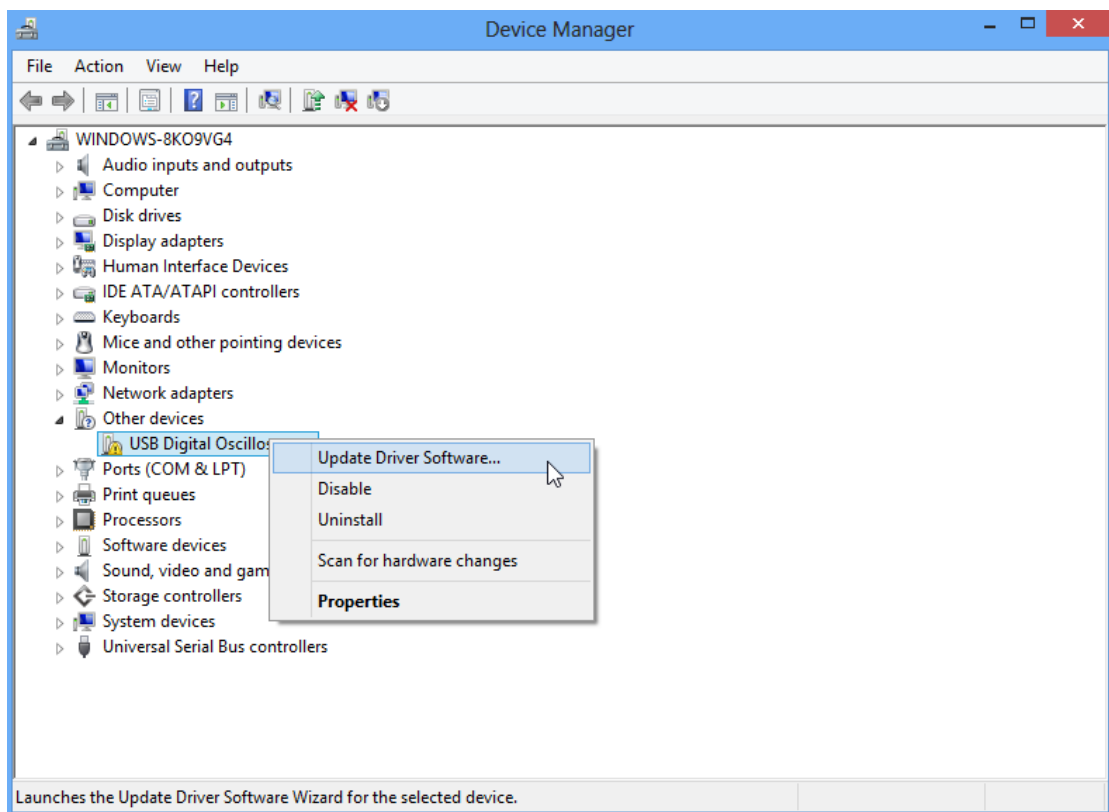
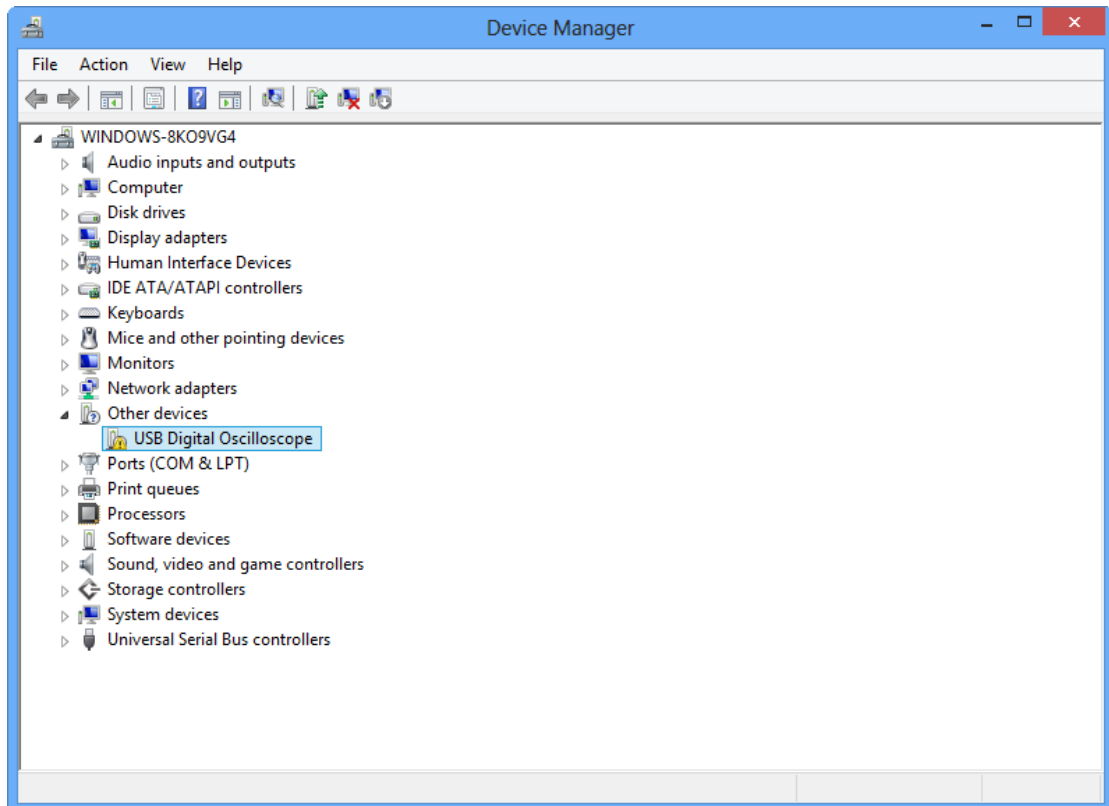


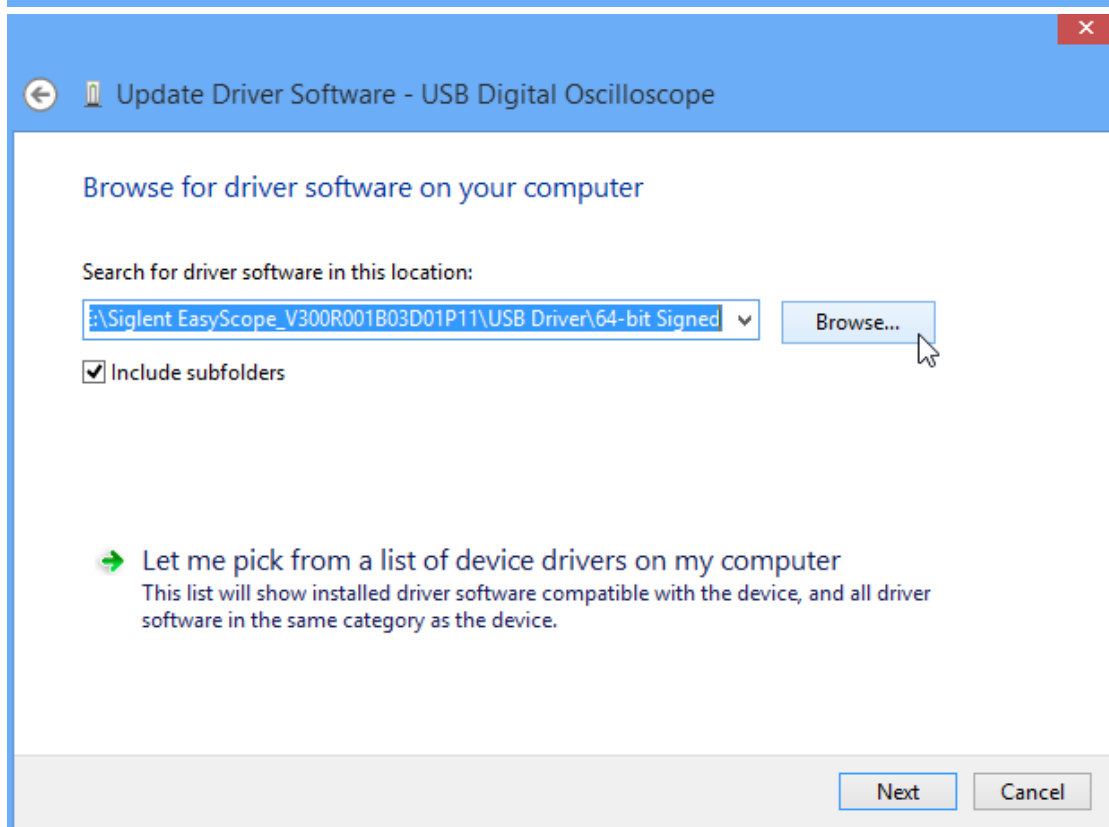
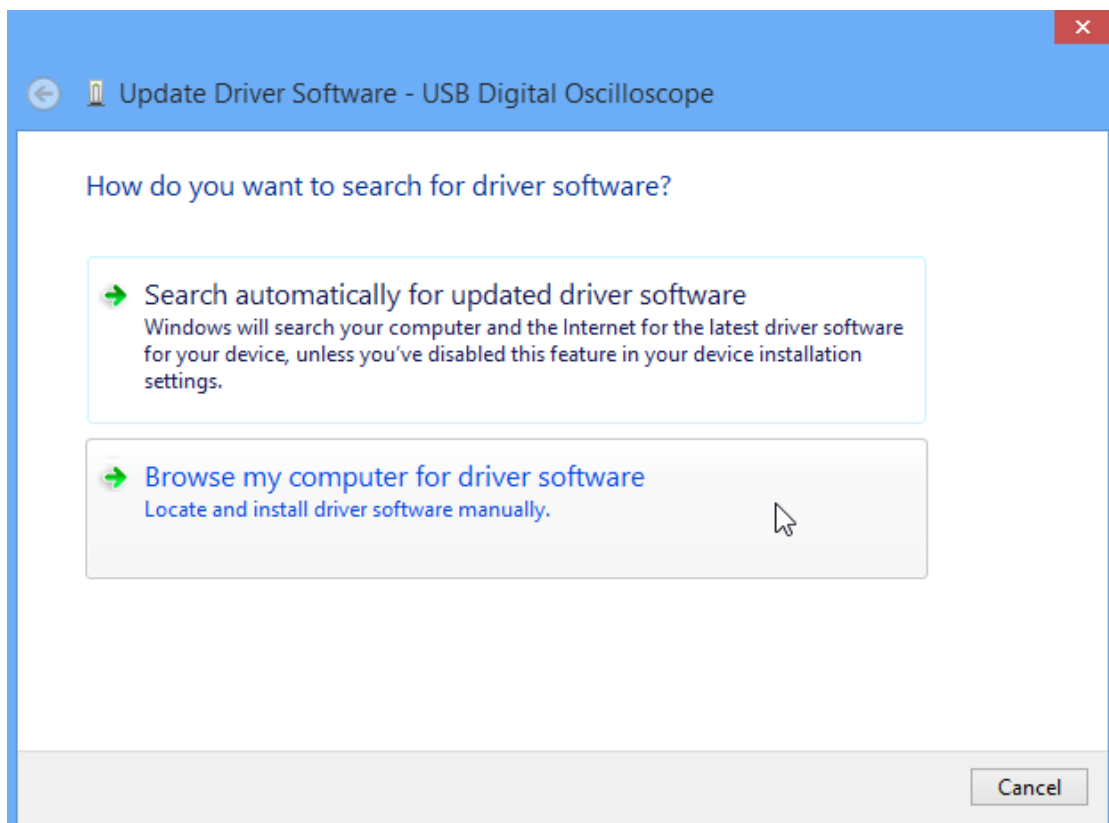
Connect successfully, as shown below:



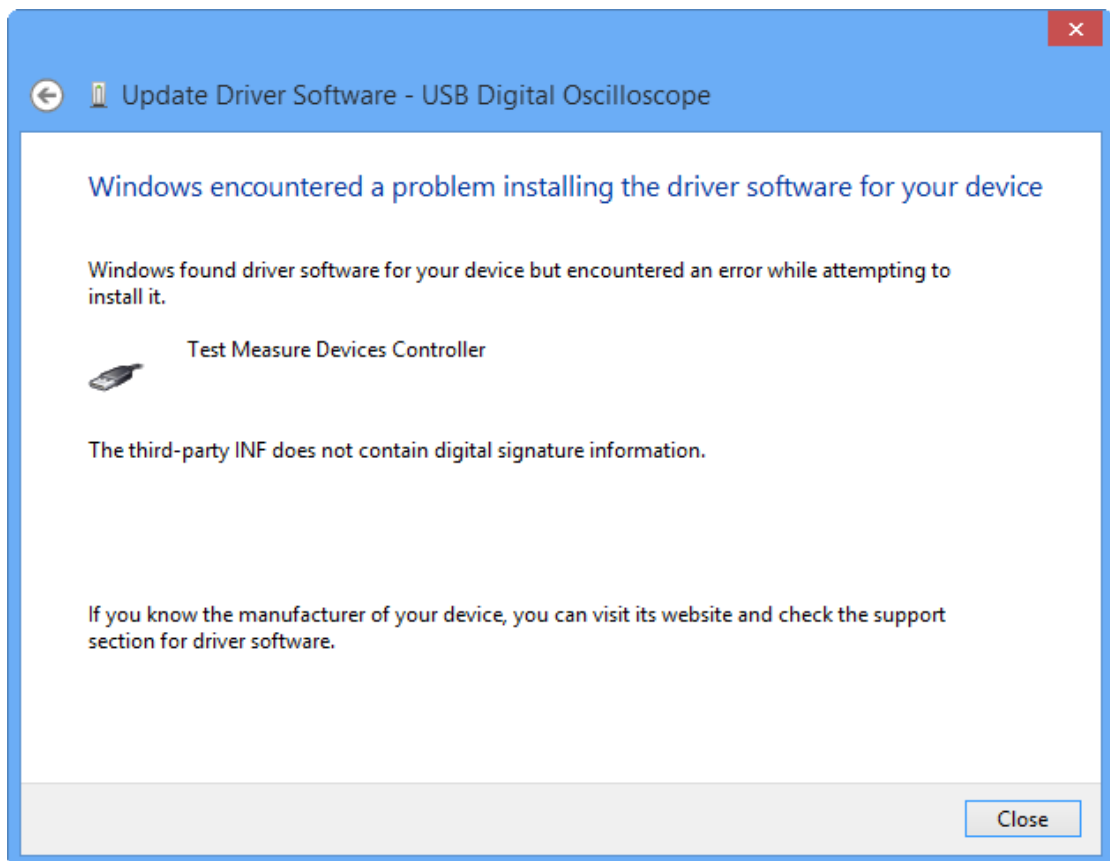
## 2. WIN8 64bit

Turn on the device, set the USB Device option to “Computer”, and connect the device to PC with USB cable. Open the Device Manager, and you can see the USB Digital Oscilloscope:

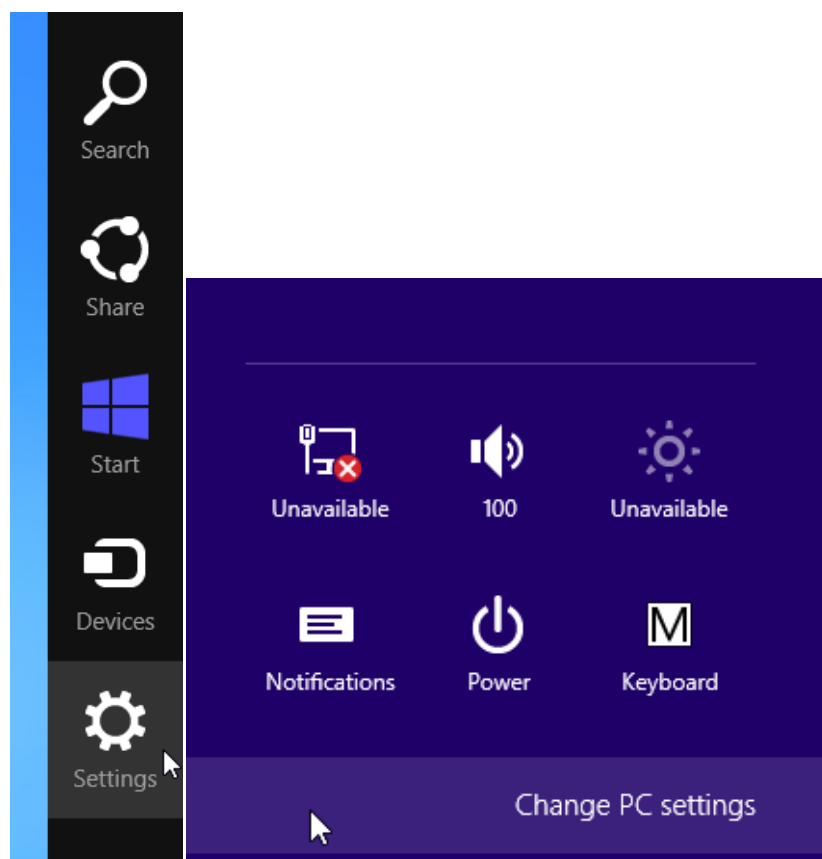




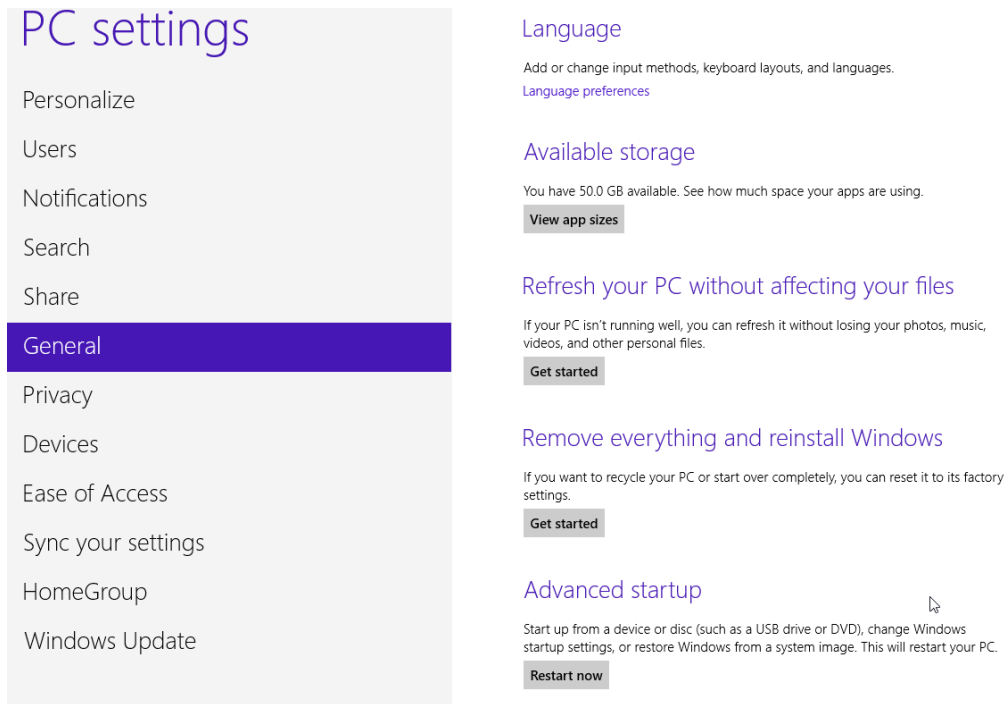
If you haven't disable driver signature enforcement, you will see the error below:



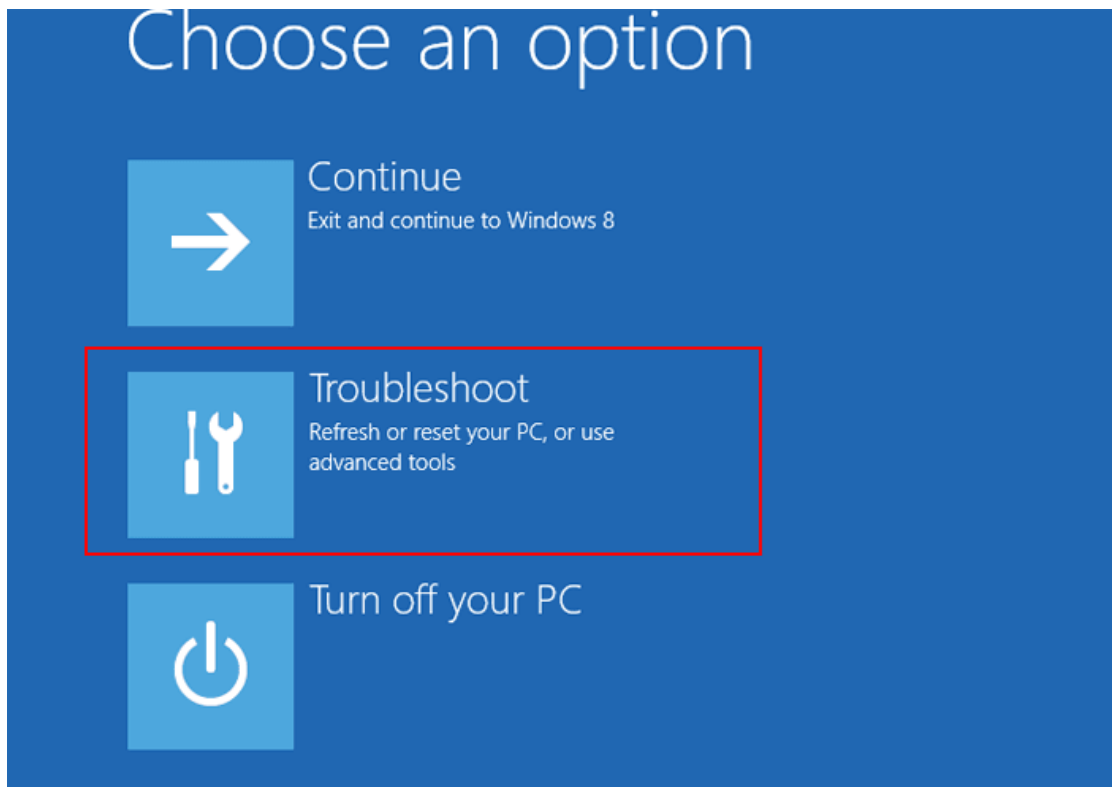
Open Charms Menu by simultaneously pressing WIN key (also referred to Windows logo key) and C key, and select Settings in it. Click Change PC settings on the bottom



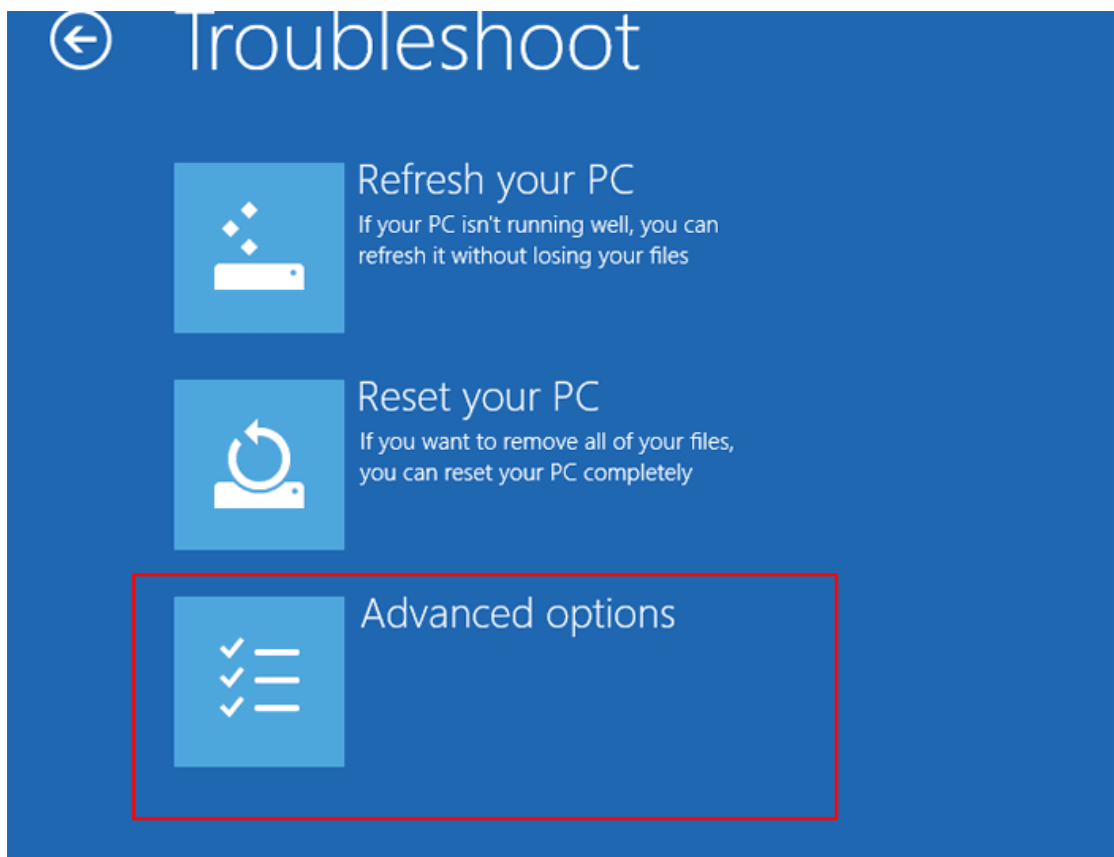
In PC settings, choose General on the left and click Restart now under Advanced startup, as shown below:



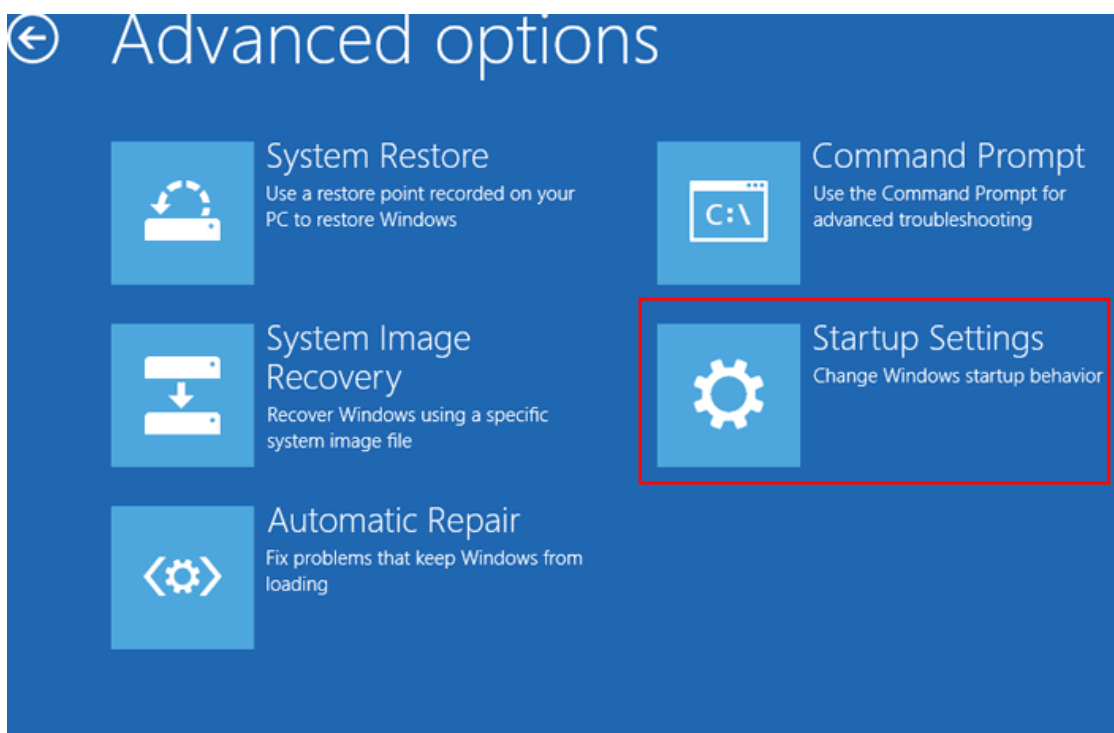
Click Troubleshoot in the next interface



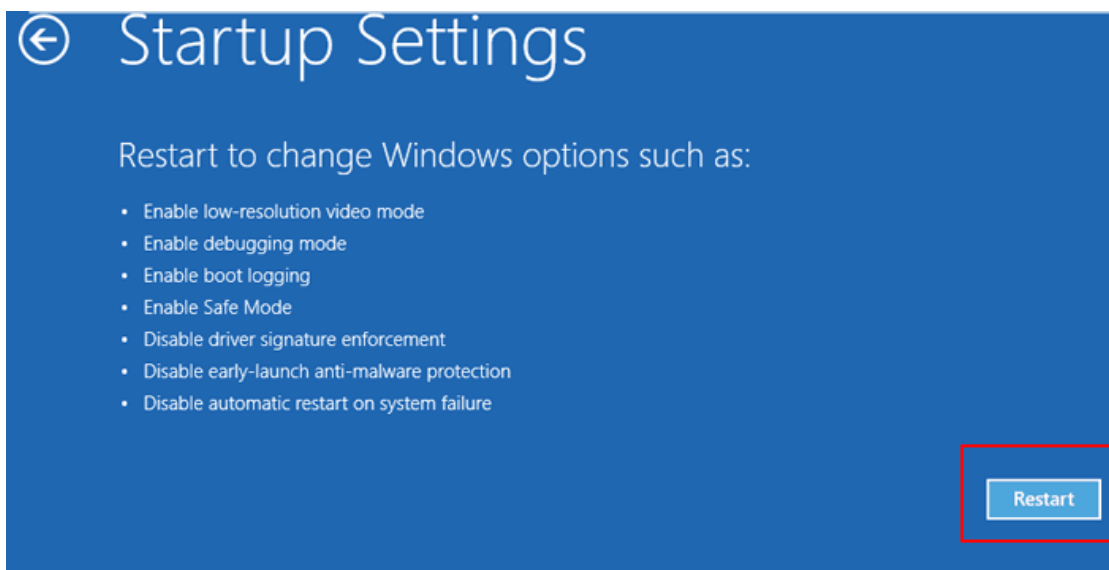
After entering Troubleshoot interface, tap Advanced options to enter it.



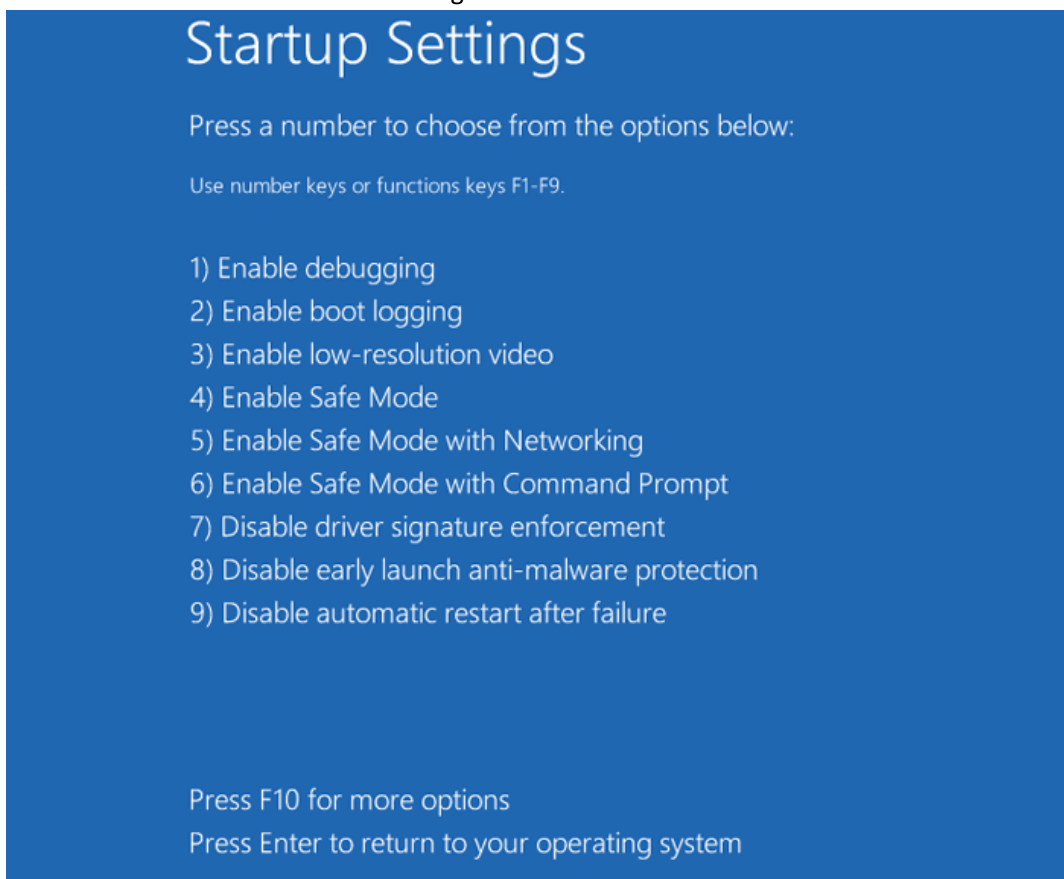
Select Startup Settings. Please refer to the picture below.



Click Restart button in Startup Settings interface.

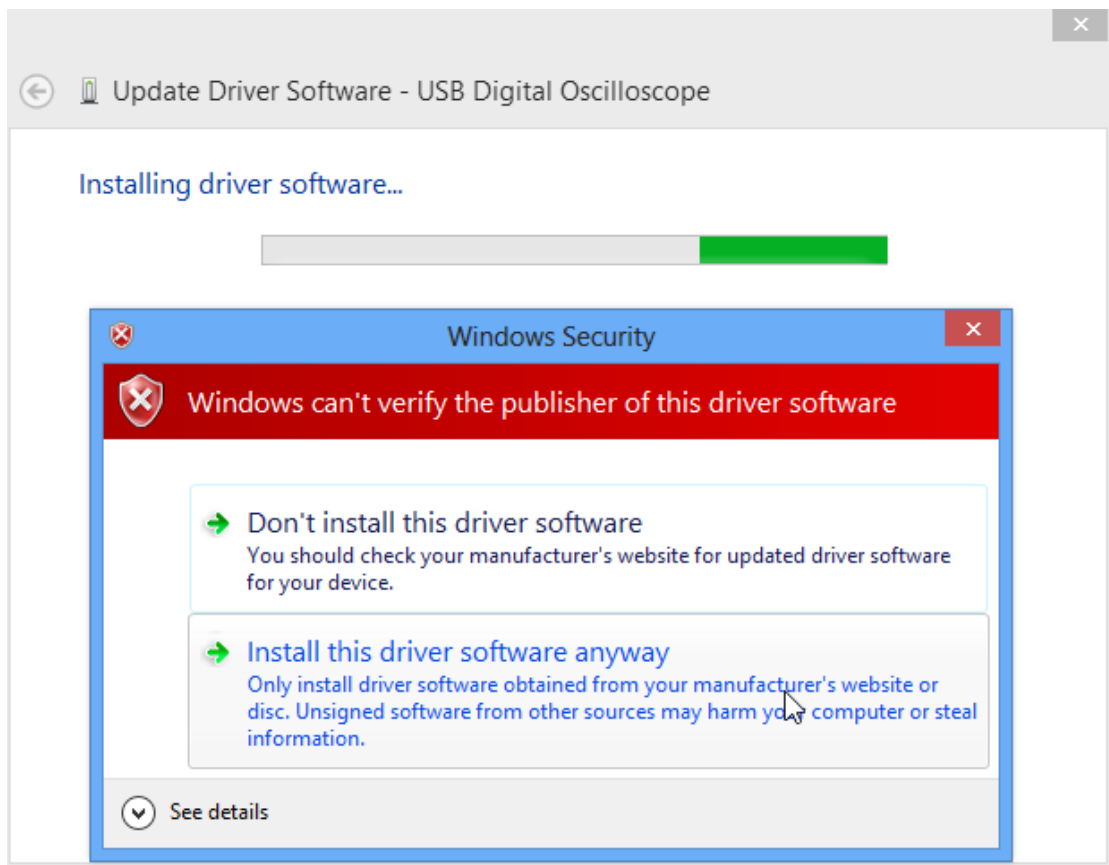


Press 7 or F7 to choose Disable driver signature enforcement.

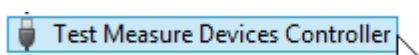
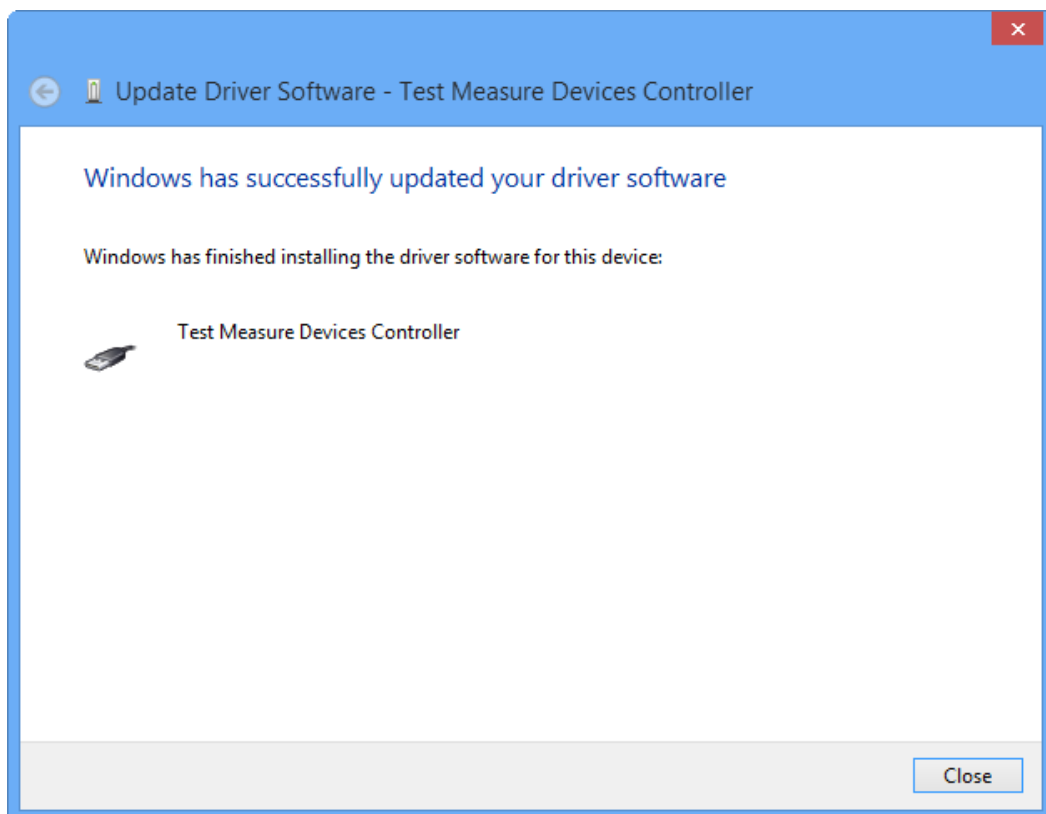


You will be able to install unsigned drivers.

When installing driver software, click the “Install this driver software anyway” option.



After successfully install the USB driver, you will see the "Test Measure Devices Controller" in Device Manager.



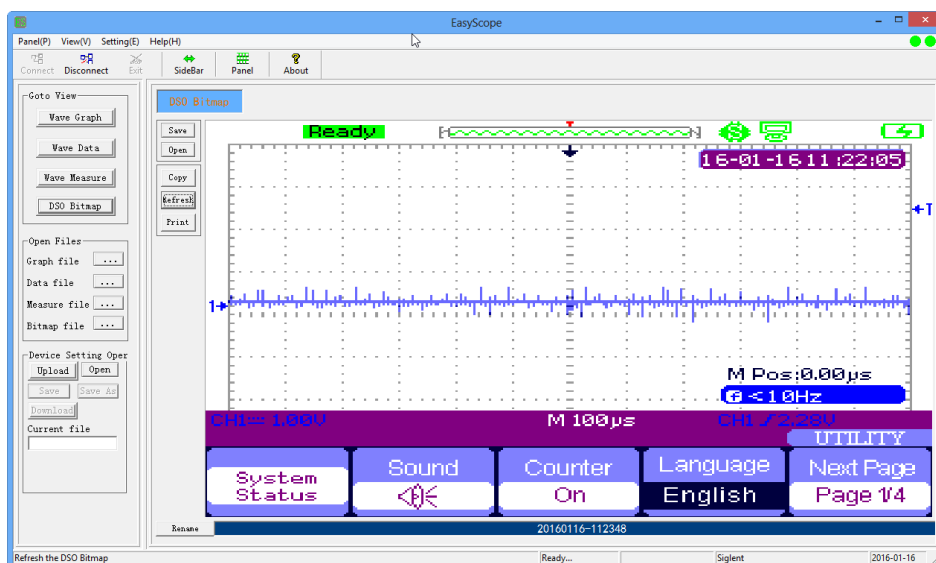
Now you can open the EasyScope, click the “Connect” button.



Connect successfully.

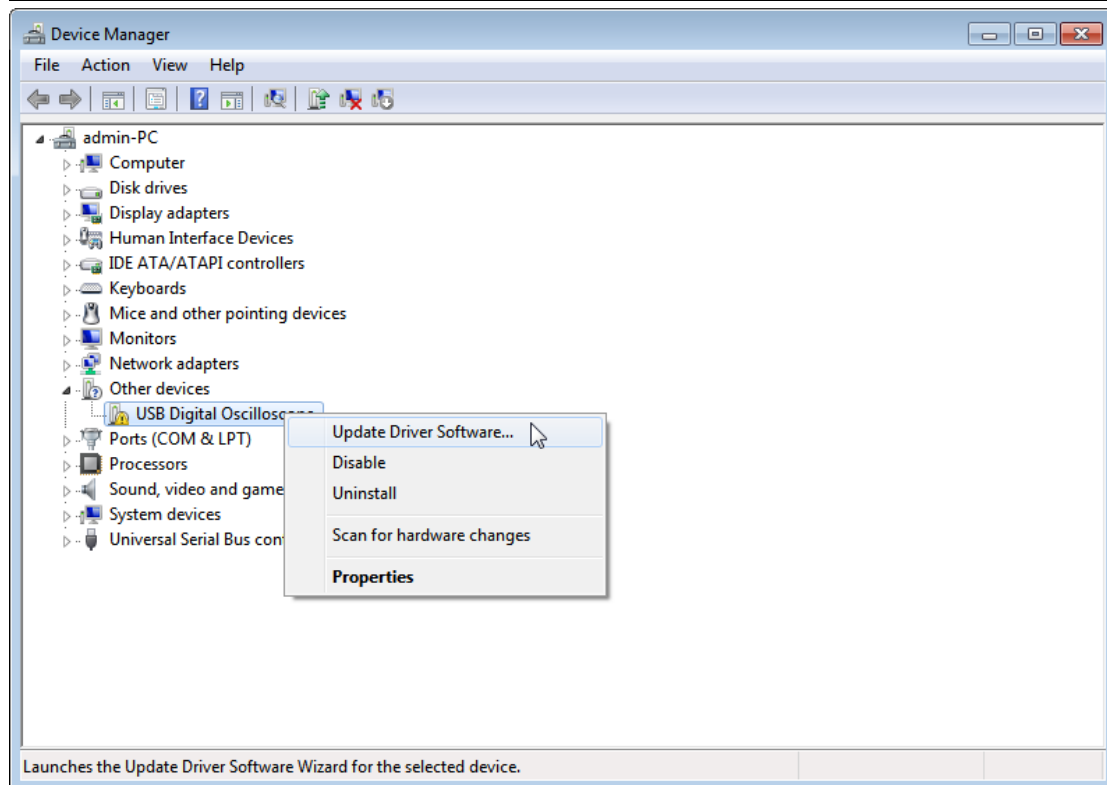
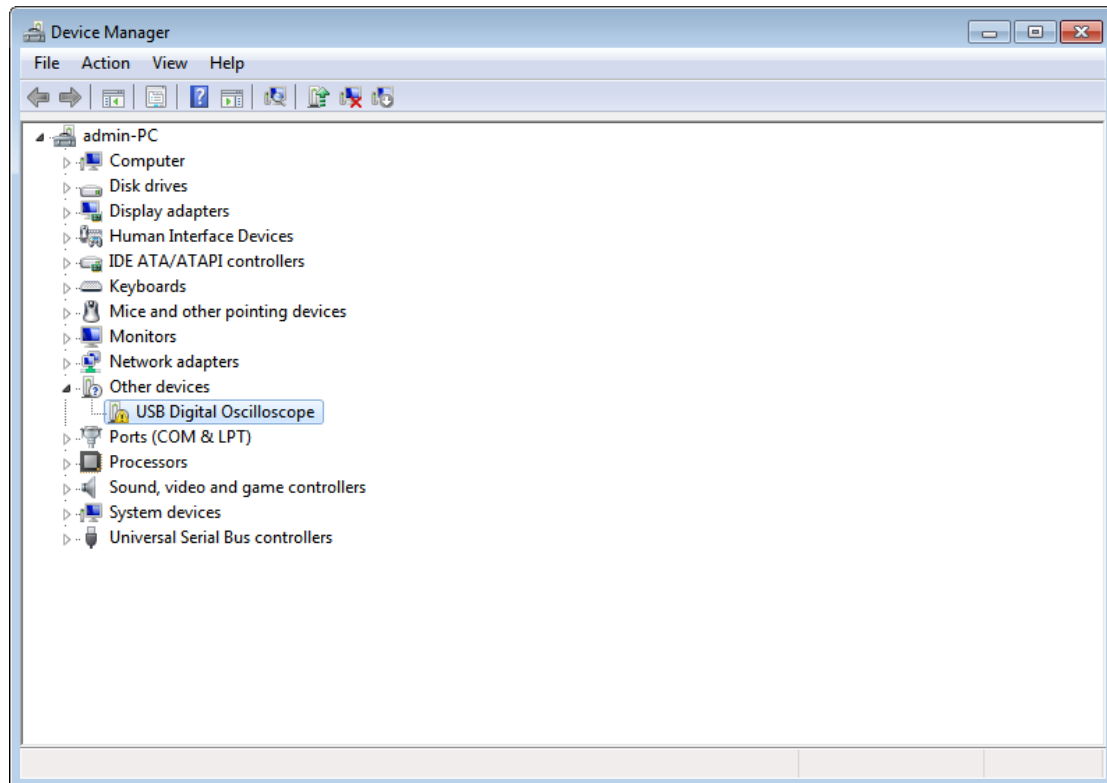


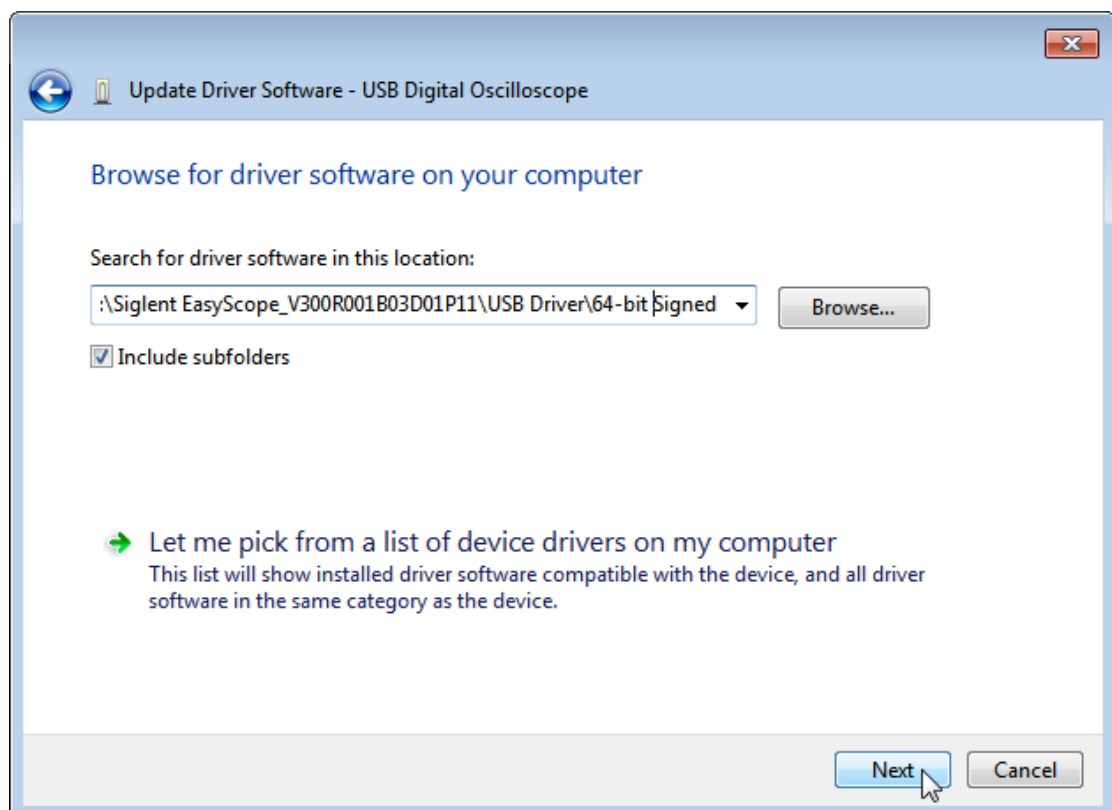
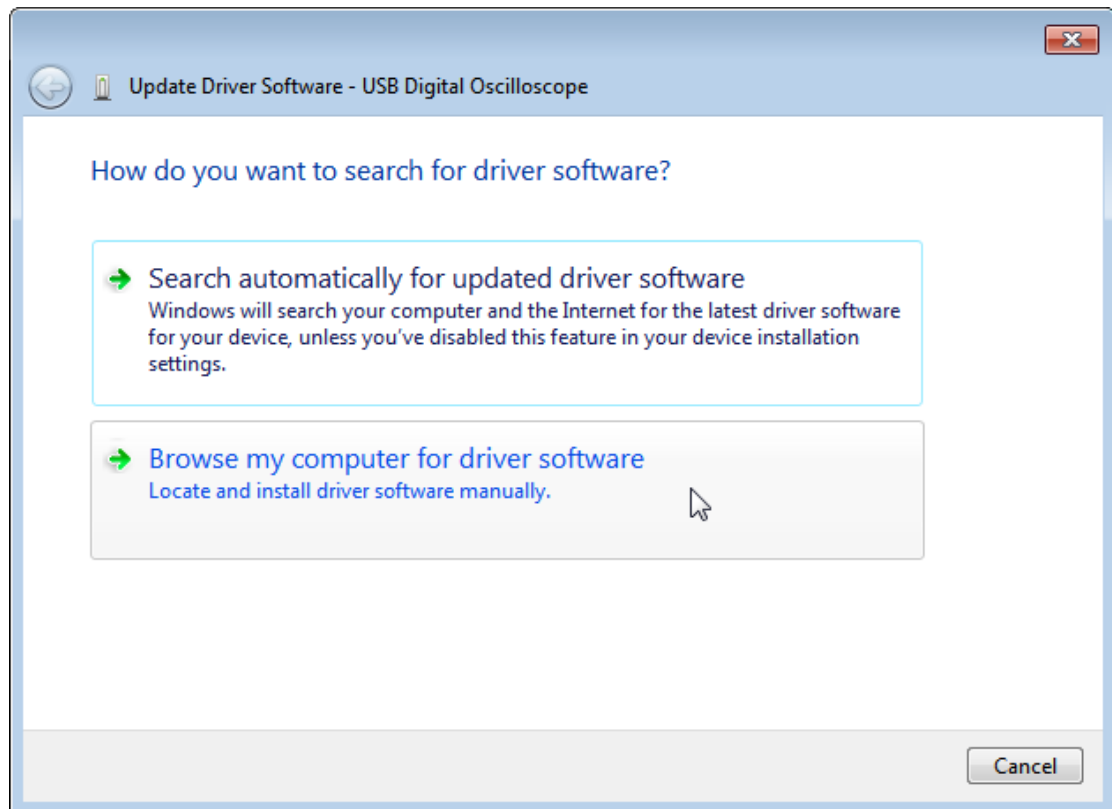
For example, you can get the screen capture of the device.

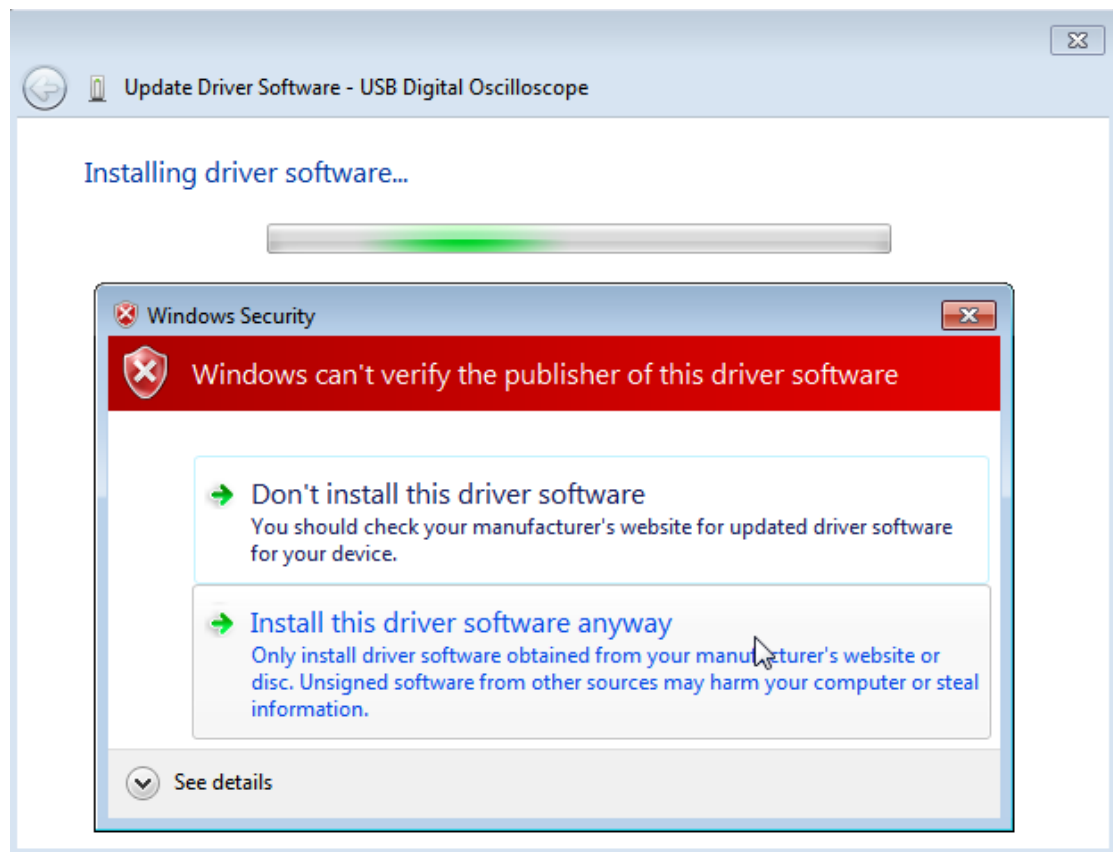


### 3. WIN7 64bit

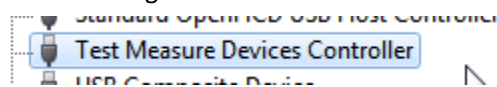
Turn on the device, set the USB Device option to “Computer”, and connect the device to PC with USB cable. Open the Device Manager, you can see the USB Digital Oscilloscope:



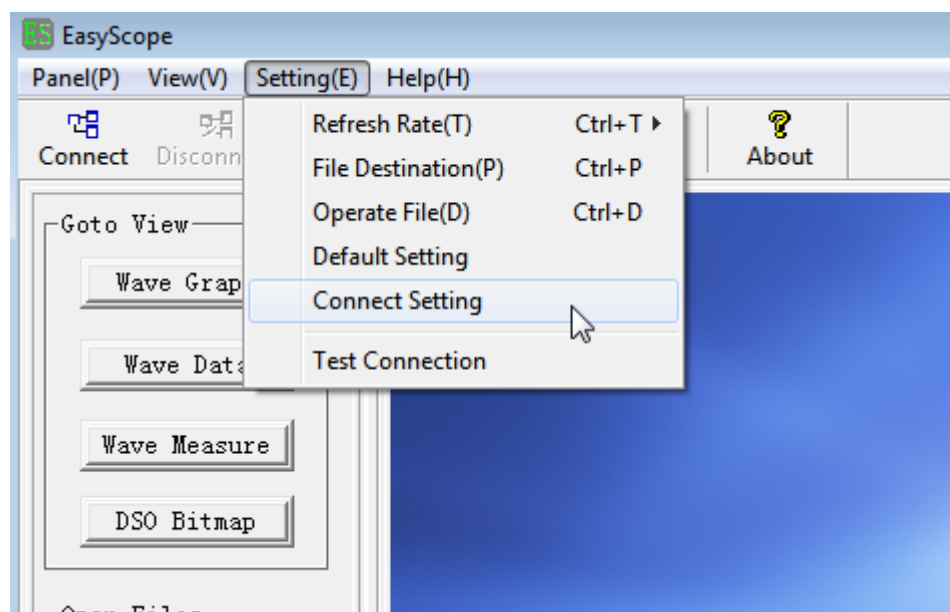


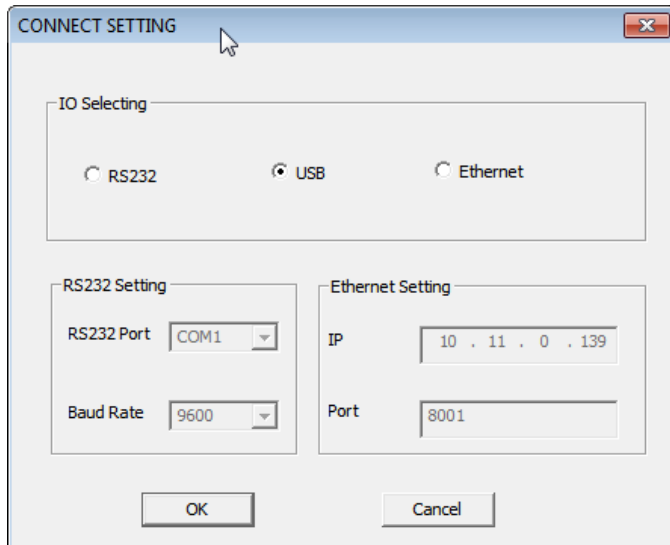


After successfully install the USB driver, you will see the "Test Measure Devices Controller" in Device Manager.

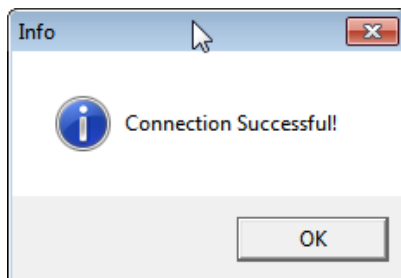


Now you can open the EasyScope to control the device.





Set the connect setting to USB, and click Test connection.



After successfully connect to the device, you can control the device. For example, get the screen capture of the device, as shown below;

