
EasyScopeX Install Guide

1 Prior to Installation

1.1 Hardware requirement

- 1GHz or higher processor
- 200M or more hard disk space
- 1024x768 monitor resolution or above
- 256M or more RAM
- USB interface and cable
- LAN interface and cable

1.2 System Support

- Microsoft Windows 2000, XP system
- Win7 32bit and 64bit system
- Vista 32bit and 64bit system
- Windows 8 32bit and 64bit system.
- Windows 10 32bit and 64bit system.

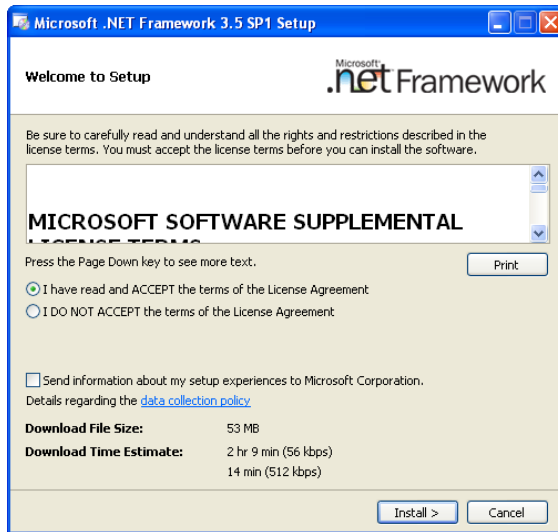
1.3 Software requirement

1.3.1 NET framework 3.5 SP1(only Windows XP system)

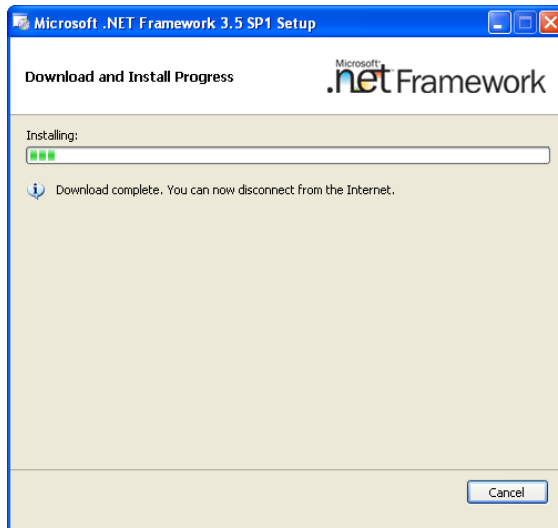
The application you are installing requires the Microsoft .NET framework version 3.5 to run. You can download the [Microsoft .NET Framework 3.5 SP1](#) package directly from Microsoft. This is a small 3 MB download with just the .NET framework installer. When you run it, the installer downloads the actual framework components that need to be installed on your computer. Once you've installed the .NET framework, you can continue installing the application.

If you plan to install version 3.5 of the .NET framework on a large number of computers, you can also download the [full package of the Microsoft .NET Framework 3.5 SP1](#). This 231 MB download comes directly from Microsoft. The small 3 MB installer likely needs to download much less than this, depending on what is already present on your computer. The installation steps are as follows:

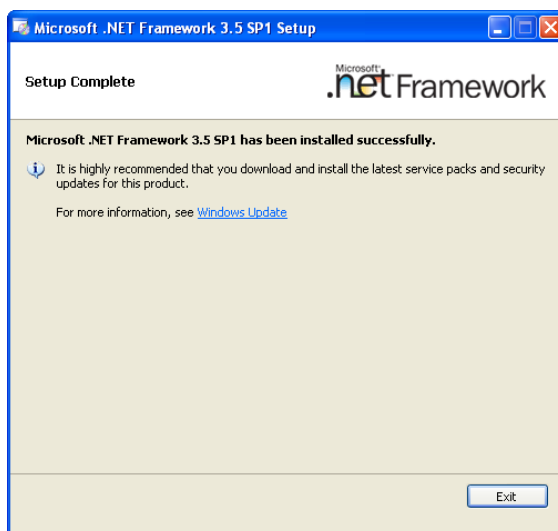
- a. Double click the dotnetfx35.exe , launch the install process, dialog as shown below:



- b. Choose ACCEPT, click Install, dialog as shown above:



- c. Wait for the installation to complete and then Click “Exit”



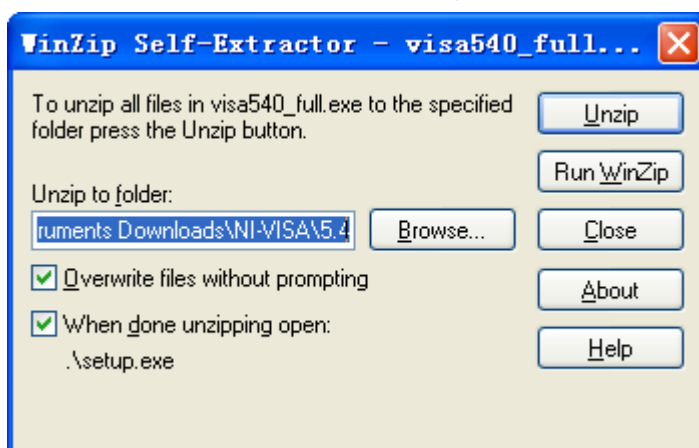
.Net Framework 3.5 is now installed on the PC. When installing on Windows 7(64 bits) or Windows Vista(64 bits) PC complete the following steps to use it:

- a. Open control panel, select Uninstall a Program.
- b. Select Open or Close Windows Functions in the new window.
- c. Check Microsoft .Net Framework in the Windows Functions Dialog box, click OK button.

NI-VISA:

Before installing the EasyScopeX application, you have to install NI-VISA 5.4(This manual takes the NI-VISA5.4 as the example and you can install the latest version), which you can download from the [NI-VISA](http://www.ni.com/download/ni-visa-5.4/4230/en/) web site at: <http://www.ni.com/download/ni-visa-5.4/4230/en/>. After you download the file you can follow the steps below to install it:

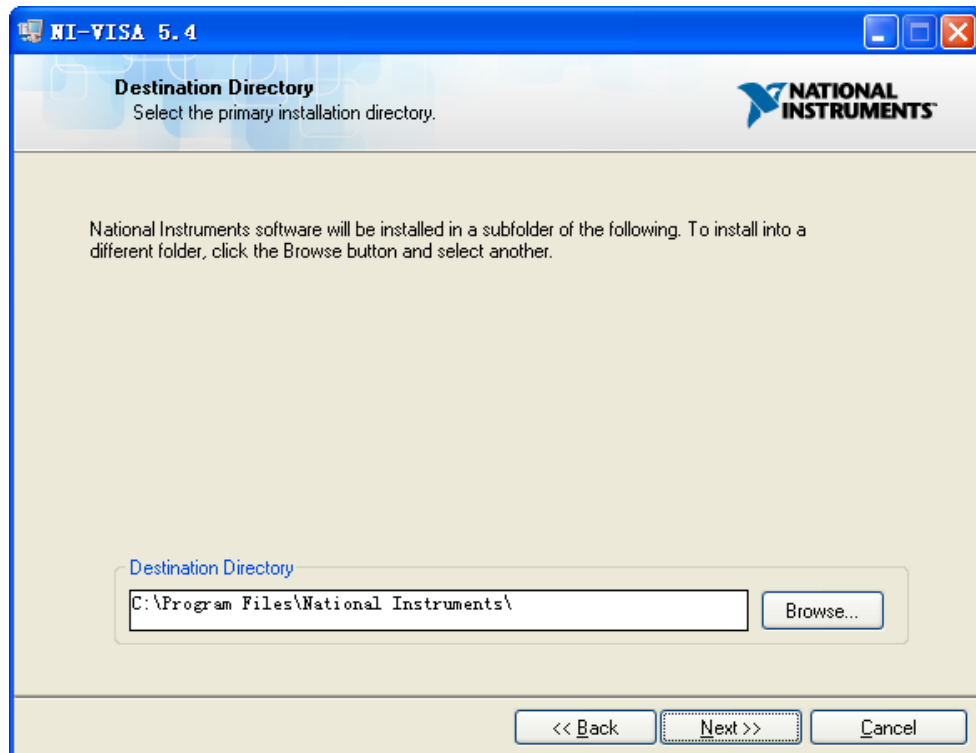
- a. Double click the visa540_full.exe, dialog shown as below:



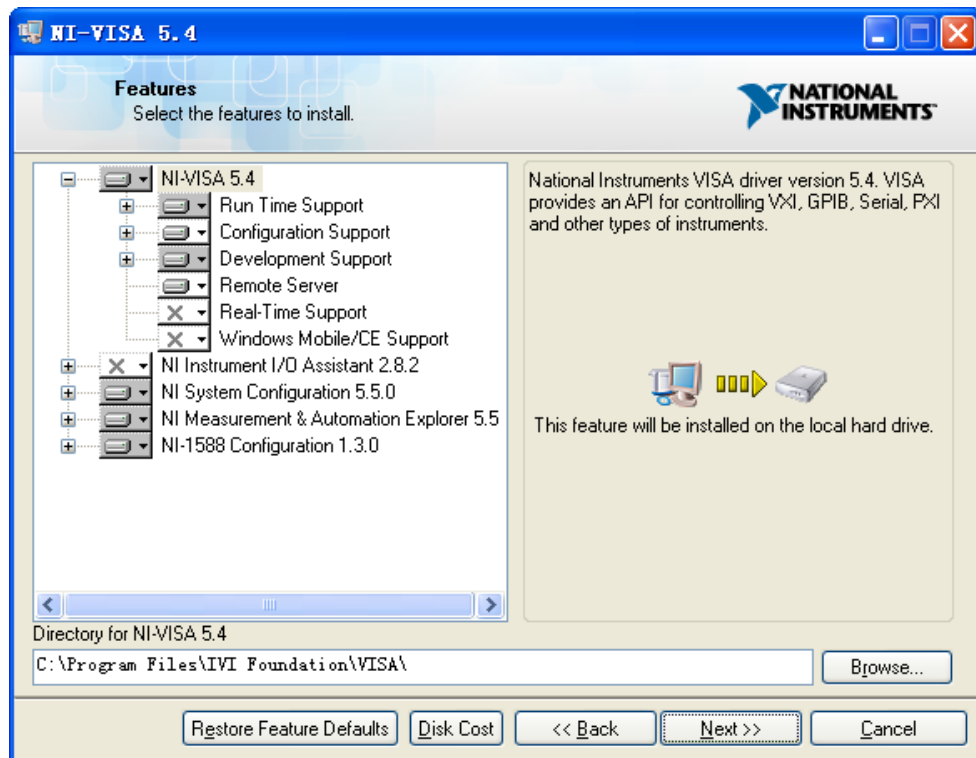
- b. Click Unzip, the install process will launch after unzipping files. If your computer needs to install .NET Framework 4, its Setup process will auto start.



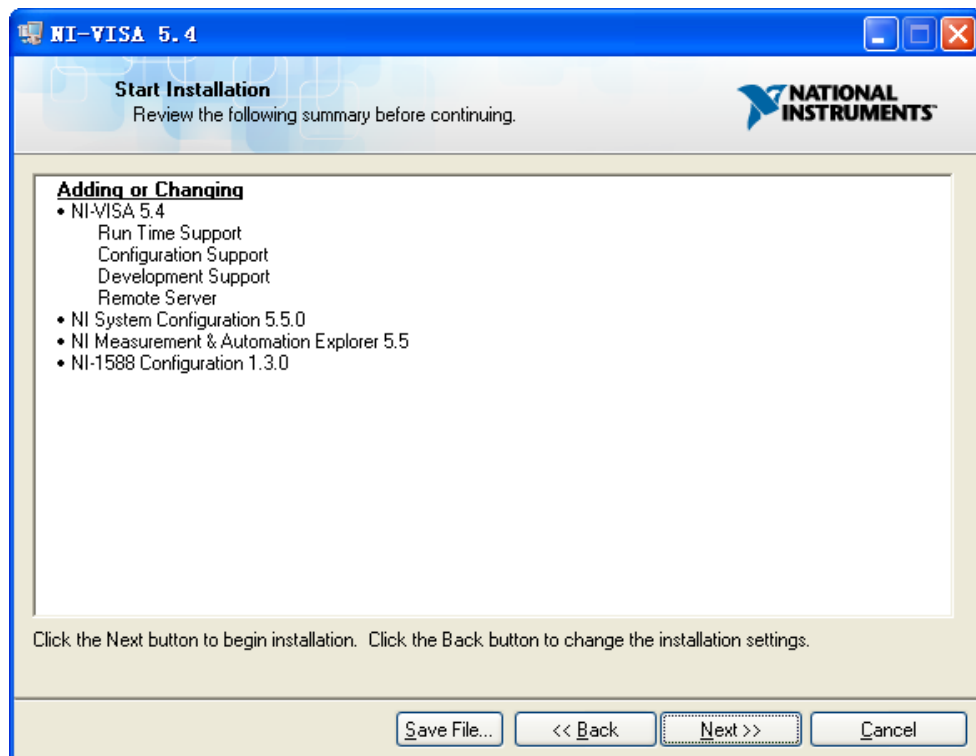
- c. The NI-VISA install dialog is shown above. Click Next to start the installation process.



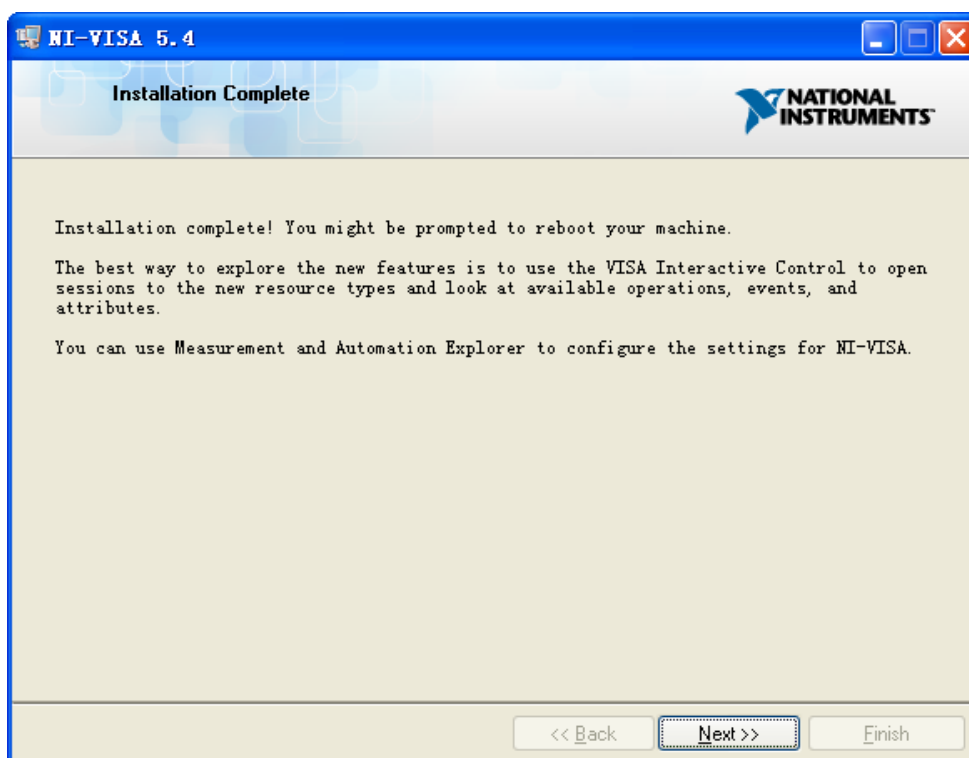
- d. Set the install path, default path is “C:\Program Files\National Instruments\”, you can change it. Click Next, dialog as shown above.



- e. Click Next twice, in the License Agreement dialog, select the “I accept the above 2 License Agreement(s).”, and click Next, dialog as shown below:



- f. Click Next to begin installation.



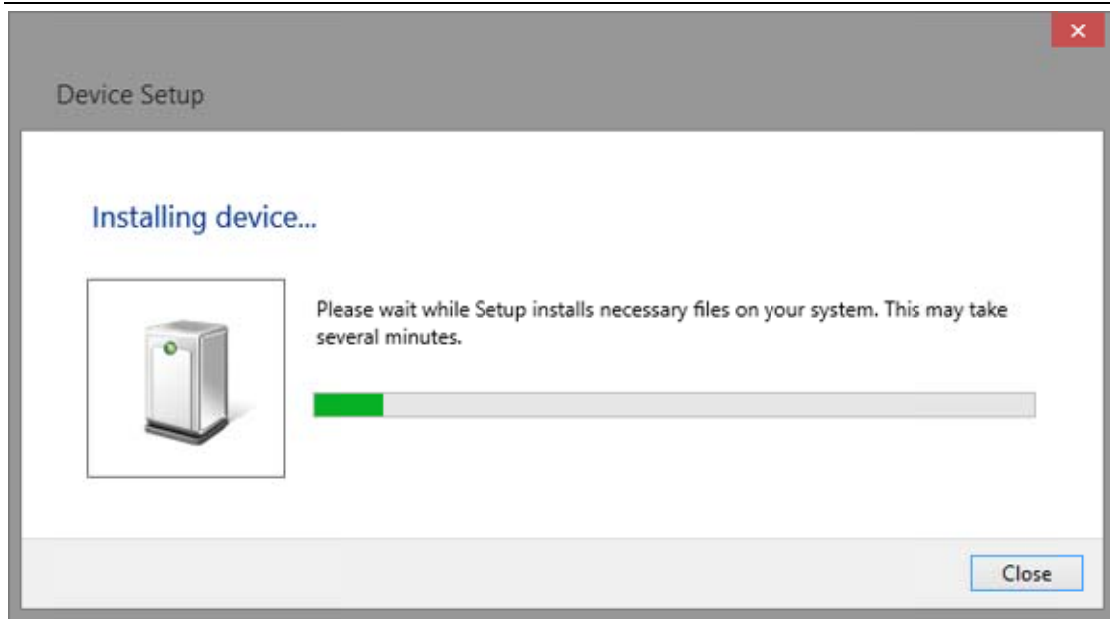
- g. Now the installation is complete, reboot your PC.

If you don't want to install the tools in NI-VISA, you can install only the NI-VISA runtime engine, which is much smaller than the full version. For example, download [NI-VISA Run-Time Engine 5.4](#) to your PC and install it as default selection. Its installation process is similar to the full version.

2 Connect the Instrument and PC

Depending on your specific model your oscilloscope may be able to communicate with a PC through the USB or LAN interface. This manual takes the USB as an example. (For instructions to communicate with a PC through the LAN interface see the User Manual.)

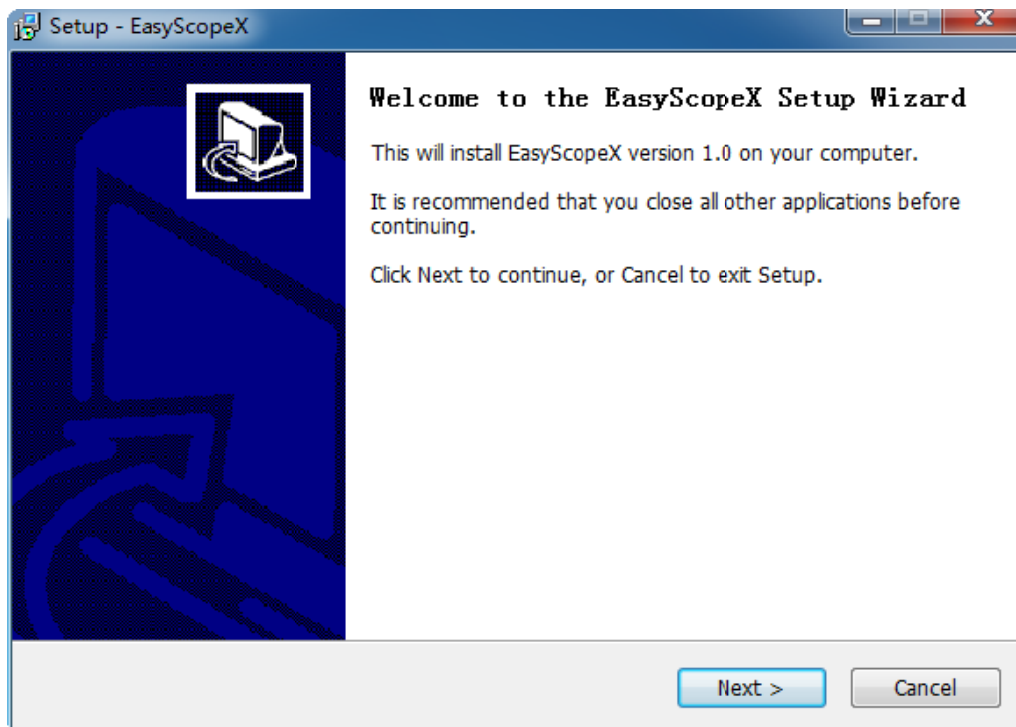
- a. Connect the USB Device interface at the rear panel of the oscilloscope and the USB Host interface of the PC using a USB cable. Assuming your PC is already turned on, turn on your oscilloscope and your PC will display the "Device Setup" screen as it automatically installs the device driver as shown below.



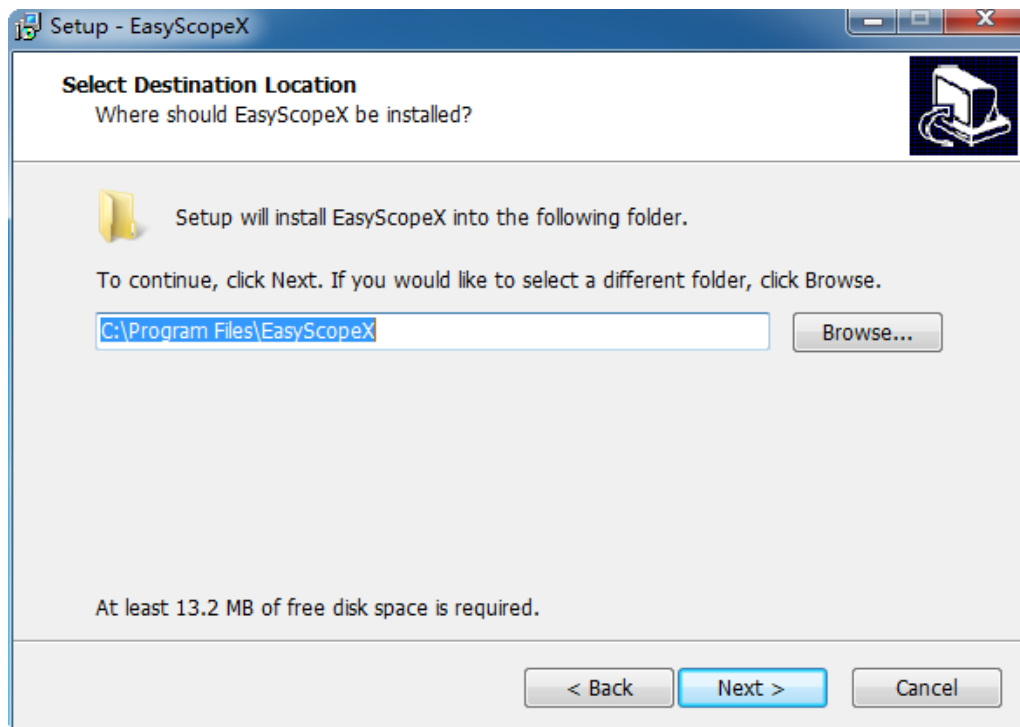
- b. Wait for the installation to complete and then proceed to the next step.

2.1 EasyScopeX Software Installation

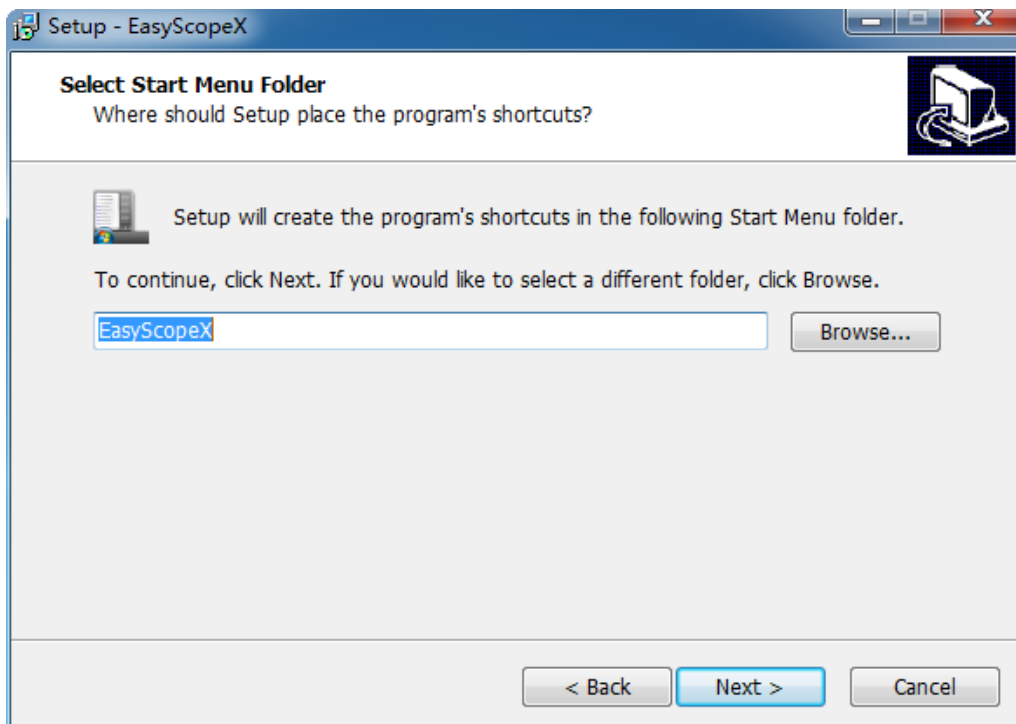
- a. Double click on the EasyScopeX_setup.exe file, launch the install process, dialog as shown below:



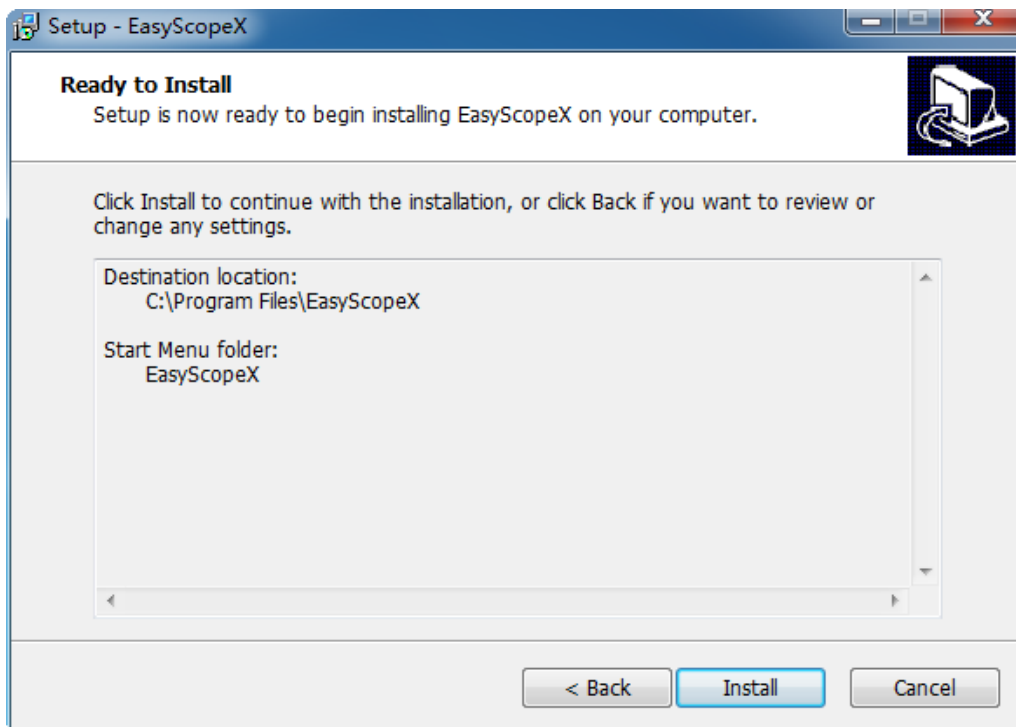
- b. Click Next, dialog as shown above:



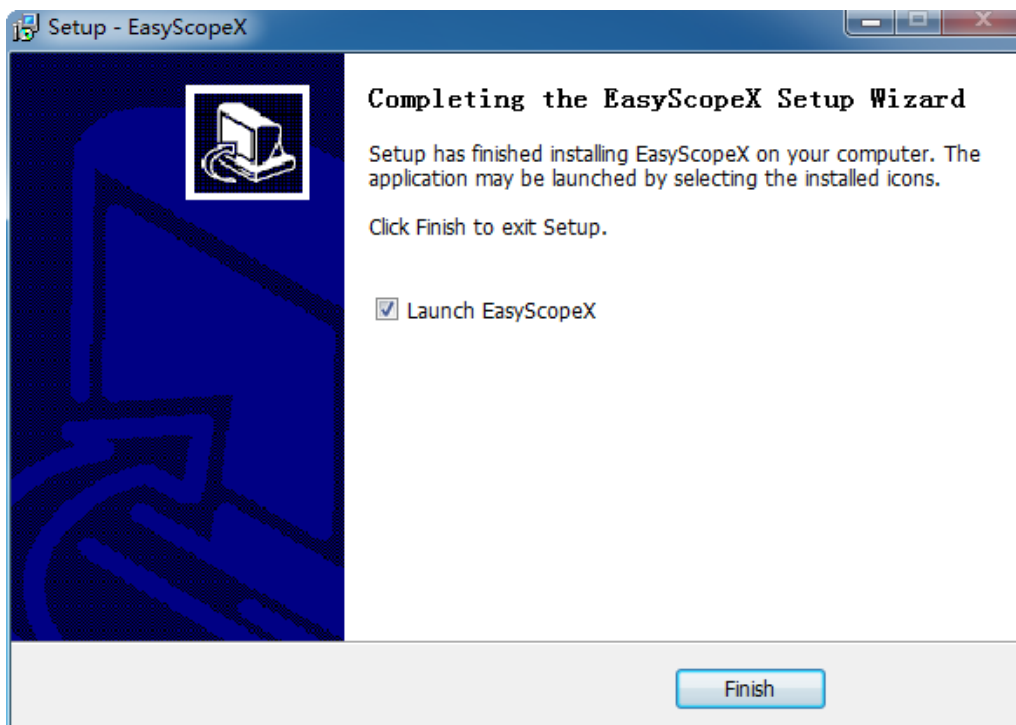
- c. Set the install path, default path is “C:\Program Files\EasyScopeX”, you can change it, click Next, dialog as shown above.



- d. Setup creates a shortcut in the following Start Menu folder. Click Next to choose default or Click Browse to select a different folder.



e. Click Install as shown above:

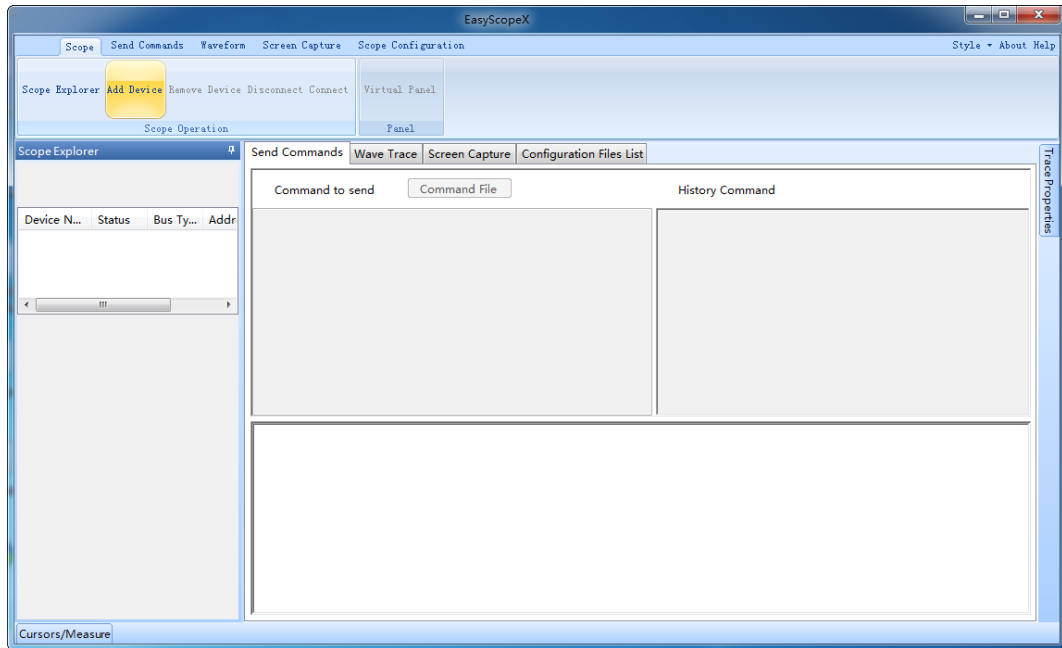


f. When the EasyScopeX setup Wizard is complete Click “Finish” to exit and EasyScopeX is launched.

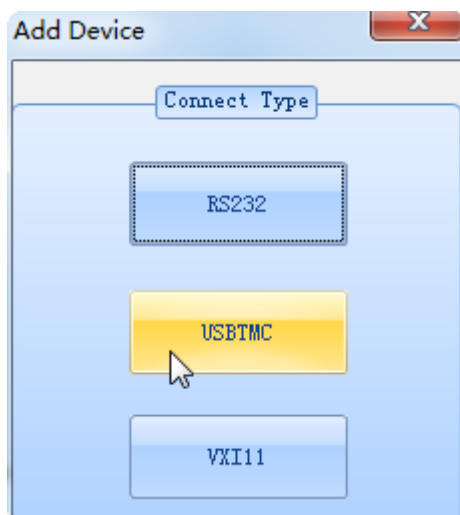
3 Connect Device

Depending on your specific model your oscilloscope may be able to communicate with a PC through the USB or LAN interface. This manual takes the USB as an example. (For instructions to communicate with a PC through the LAN interface see the User Manual.)

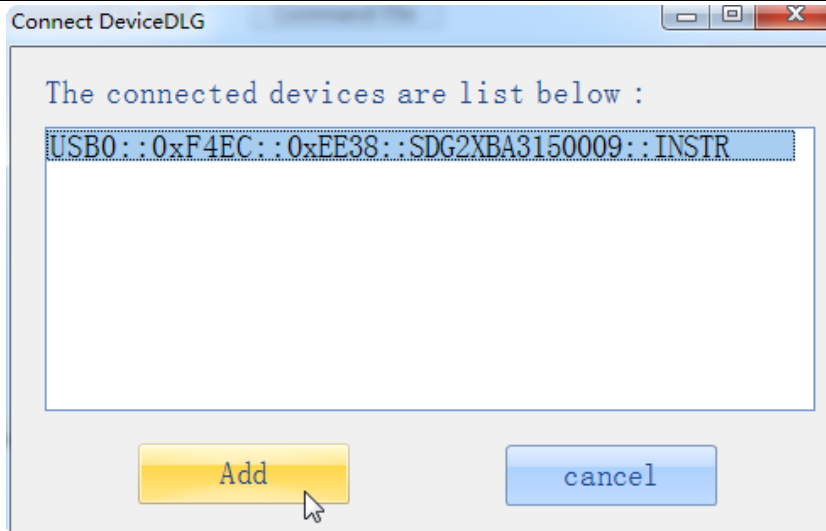
- a. The application EasyScopeX is shown below.



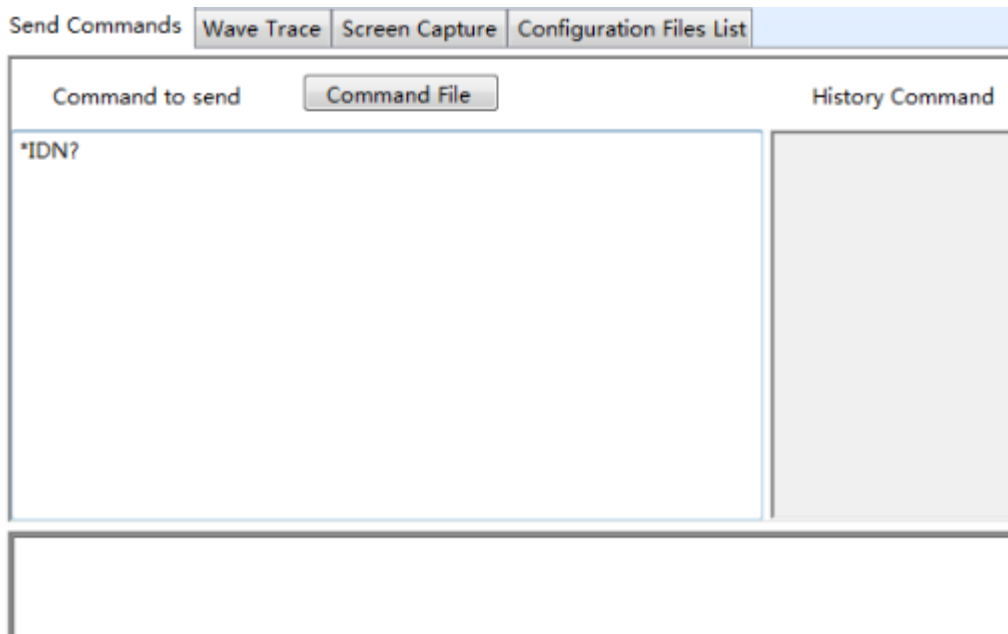
- b. Click Add Device Button, the Add Device dialog is shown below:



- c. Click USBTMC, the Connect DeviceDLG is shown below:



- d. Click the Add button to add it to the Scope Explorer, and you can communicate with the device in the application. Input “*IDN?” in Send Commands text area, as below:



- e. Pressing the Enter key will return for you the device information, the result is shown below:

Send Commands		Wave Trace	Screen Capture	Configuration Files List
Command to send	<input type="button" value="Command File"/>	History Command		
<div></div>		<div>*IDN?</div>		

Siglent Technologies,SDG2042X,SDG2XBA3150009,2.01.01.08