

Quick Start

SPD3303S/3303D

Programmable DC Power Supply

QS0503S-E01B

Copyright Information

1. SIGLENT TECHNOLOGIES CO., LTD. All Rights Reserved.
2. Information in this publication replaces all previous corresponding material.
3. SIGLENT reserves the right to change the specifications and price of the product.
4. Any way of copying, extracting and translating the content of the manual is not allowed without permission of SIGLENT.

Note:

SIGLENT is the registered trademark of SIGLENT TECHNOLOGIES CO., LTD.

General Safety Summary

Please review the following safety precautions carefully to avoid personal injury or damage to this product or any product connected to it. To prevent potential danger, please use the instrument as specified.

Use proper power cord

Only the power cord designed for the instrument and authorized by local country could be used.

Power supply

AC Input Voltages: 100V/110V/220V/230V \pm 10%, 50/60Hz.

Use proper fuse

The fuse types: 100V/110V: T6.3A/250V; 220V/230V: T3.15A/250V;

Make sure to use the correct type of fuse before turning on the instrument.

Do not connect the power cord before replacing the fuse.

Find out the reason why the fuse burned out before replacing the fuse.

Ground the instrument

The instrument is grounded through the protective terra conductor of the power cord. To avoid electric shock, the grounding conductor must be connected to the earth. Make sure that the instrument is properly grounded before any inputs or outputs.

Observe all terminal ratings

To avoid fire or electric shock, please observe all ratings and symbols on the instrument. Read this guide carefully to know more details about the ratings before connection.

Keep proper ventilation

Inadequate ventilation may cause an increase of temperature,, which will lead to further damage. Please keep proper ventilation and check the fan and air-vents regularly when using the instrument.

Operate condition

Location: indoor, no strong light, almost no Interfering pollution;

Comparative humidity: <80%

Altitude: <2000m

Temperature: 0°C to 40°C

Do not operate in an explosive atmosphere

To avoid personal injury or damage to instrument, please do not operate in an explosive atmosphere.

Keep surface of the product clean and dry

To avoid dust or moisture in the air influence the performance of the instrument , please keep surface of the product clean and dry.

Safety Terms and Symbols

Terms may appear on the product:

DANGER: Indicates direct injury or hazard that may happen.

WARNING: Indicates potential injury or hazard that may happen.

CAUTION: Indicates potential damage to the instrument or other property that may happen.

Symbols may appear on the product:



**Hazardous
Voltage**



**Protective
Earth Ground**



Warning



**Earth
Ground**



**Power
Switch**

SPD3303S/3303D Brief Introduction

SPD3303S/3303D Programmable DC Power Supply is convenient, flexible and multi-function. It has three independent outputs, two sets of adjustable voltage value and a fixed set of selectable voltage value of 2.5V, 3.3V, and 5V ,and it also provides output short circuit and overload protection at the same time.



Main features of SPD3303S/3303D

4.3" TFT color LCD display with content of 16M;

Three independent outputs, two of which are adjustable, and the total power up to 195W;

Four kinds of input voltage values includes 100V, 110V, 220V and 230V to satisfy different requirements;

Function of storage and call setting parameters;

Function of timing output ;

Function of waveform display, Real-time display of voltage or current waveforms with digital display of voltage, current and power values

Start up screen protective procedure every fixed interval(30 minutes)

Perfect PC software to realize the real-time control through USBTMC.

Content

General Safety Summary	II
SPD3303S/3303D Brief Introduction.....	V
Chapter 1 Quick Start	1
General Inspection	1
Safety Considerations	2
The front panel	3
The rear panel	7
Output check	8
Chapter 2 Control panel operation	9
2.1 Output summary.....	10
2.2 CH1/CH2 Independent Output.....	11
2.3 CH3 Independent mode	12
2.4 CH1/CH2 Series mode	13
2.5 CH1/CH2 Parallel mode.....	15
2.7 Timer	18
2.9 Version information	21
2.10 Upgrade firmware.....	22
Chapter 3 Remote control	25
3.1 Command list	25
3.2 Command description	26
Chapter 4 Specification.....	32
Chapter 5 Troubleshooting	34
Contact SIGLENT	35

Chapter 1 Quick Start

In this chapter, we mainly introduce the panel and display of SPD3303S/3303D, as well as the new machine inspection and attentions at first use. Reading the following steps will give you a quick understanding on operation.

General Inspection

1. Inspect the shipping container.

Keep the damaged shipping container or cushioning material until the contents of the shipment have been completely checked and the instrument has passed both electrical and mechanical tests.

The consigner or carrier will be responsible for damages to the instrument resulting from shipment. **SIGLENT** would not provide free maintenance or replacement.

2. Inspect the instrument.

If there are instruments found damaged, defective or failure in electrical and mechanical tests, please contact **SIGLENT**.

3. Check the accessories.

Please check the accessories according to the packing list. If the accessories are incomplete or damaged, please contact your **SIGLENT** sales representative.

Safety Considerations

To ensure that the instrument can work normally, please conduct necessary inspection before using the SPD3303S/3303D.

Input Power Requirement

The SPD3303S/3303D allows a 50Hz/60Hz frequency, and four levels of AC power: 100V/120V/220V/230V. You can select wanted power voltage with the “DIP Switch ” at the rear panel according to the actual demand.



Warning

To switch to the wanted power voltage, please disconnect the power cord first.

Electrical Check

Please use the power cord provided as accessory and connects the instrument to AC power. Check the power as the following steps.

1. Connect the power supply



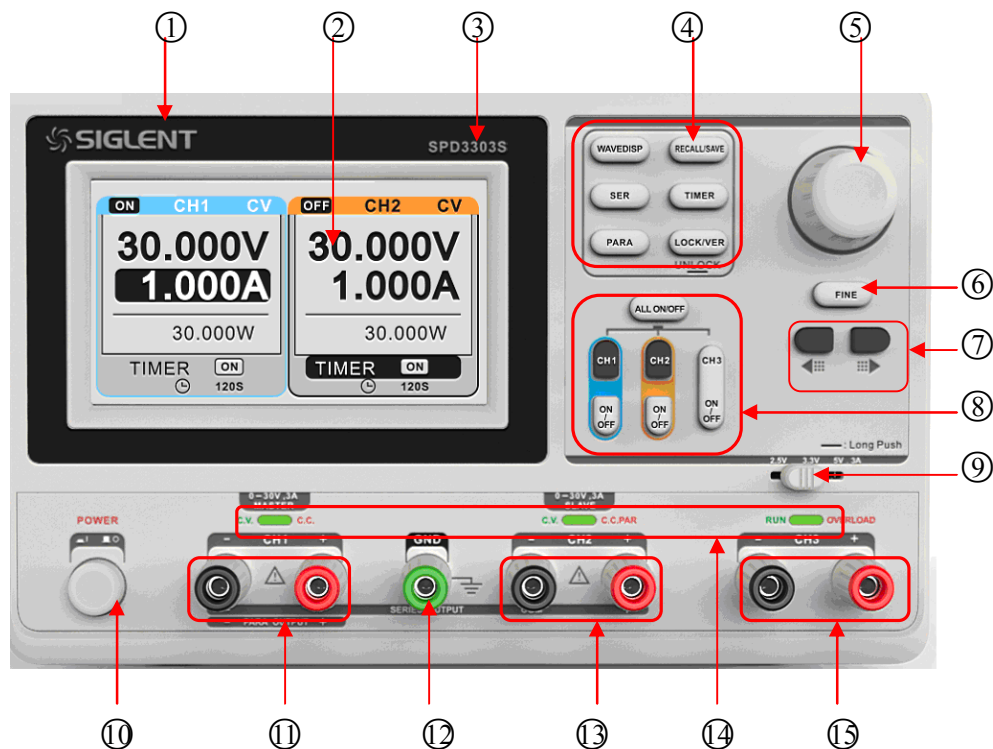
Warning

To avoid electric shock, please make sure that the instrument is grounded correctly.

2. Turn on the power switch

Press the button **POWER** to enter boot interface, and system return to the default settings after a while.

The front panel





NO.	Description	NO.	Description
1	Logo	9	CH3 DIP Switch
2	Display Area	10	Power Switch
3	Model	11	CH1 Output Terminal
4	System parameter configuration button	12	Ground Terminal
5	Multi-function knob	13	CH2 Output Terminal
6	Fine Adjust button	14	CV/CC indicator light
7	Right/Left Direction button	15	CH3 Output Terminal
8	Channel Control button		

Instruction for buttons

Buttons for setting parameters

WAVEDISP : Press the button to turn on/off the waveform display interface;

SER : Press the button to set series mode of CH1/CH2, and the logo
“” displays at the same time;

PARA : Press the button to set parallel mode of CH1/CH2, and the logo
“” displays at the same time;

RECALL/SAVE : Press the button to enter the storage function interface

TIMER : Press the button to enter timer setting interface

LOCK/VER : Press the button longer to lock it and shorter to turn to system information interface.

Buttons for controlling the channel

ALL ON/OFF : Press the button to turn on/off all the channels;

CH1 : Press the button to select CH1 as the current channel;

CH2 : Press the button to select CH2 as the current channel;

ON/OFF : Press the button to turn on/off the CH1 output;

CH3 ON/OFF : Press the button to turn on/off the CH3 output.

Other buttons

FINE : Press the button to open the fine tuning function and change the parameters with the minimum step;

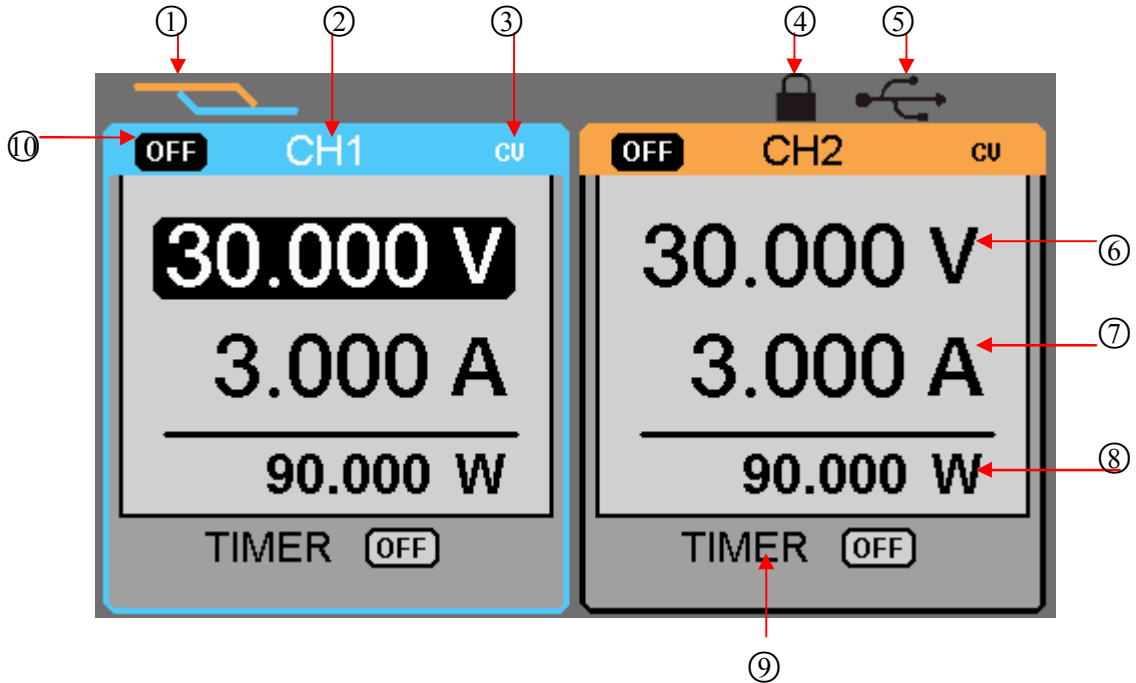
  : To move the cursor around.

The output terminal on front panel



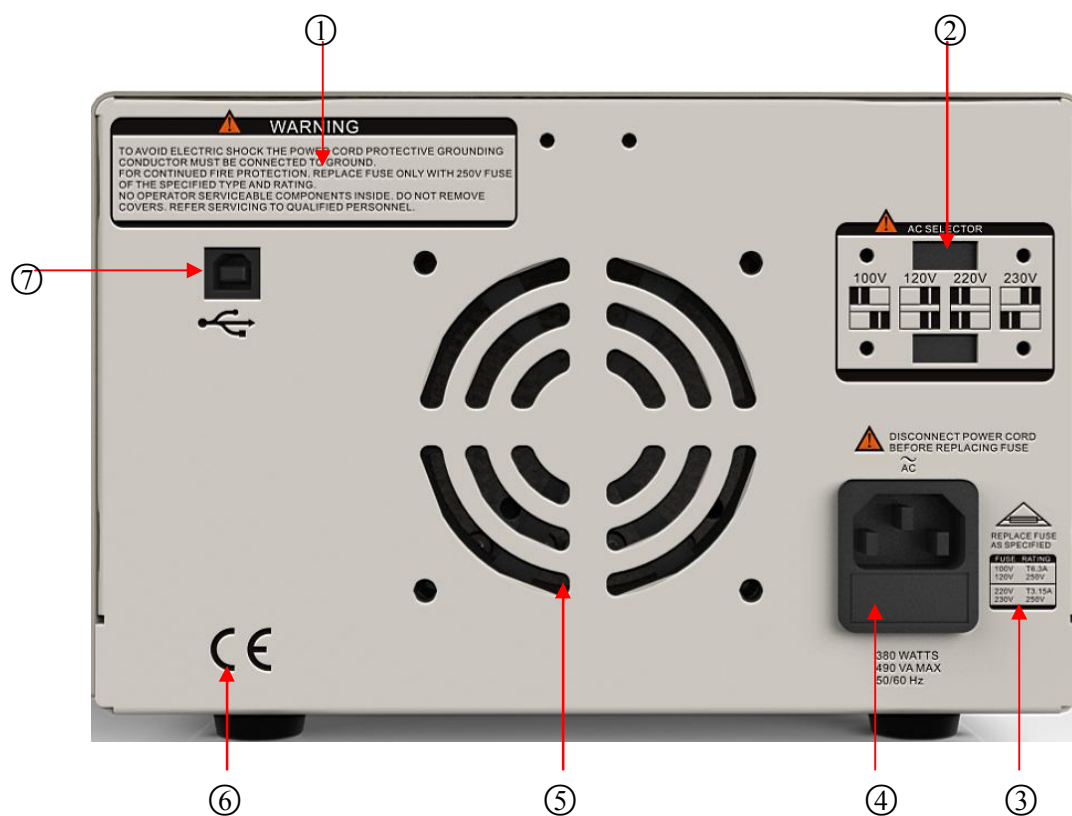
The output terminals of CH1、CH2 and CH3 include positive terminal and negative terminal, and a common ground for CH1 and CH2 additional. Each channel has its own logo. The operation details are introduced in the follow-up ” control panel operation”.

User interface



- ① Parallel/Series logo: The logo will be displayed when the corresponding mode is on
- ② Channel logo;
- ③ Operating mode logo: The corresponding logo will display when working in CV or CC mode;
- ④ LOCK logo: It will display when the LOCK is turned on
- ⑤ USB logo: It will display when there is a USB connection;
- ⑥ Voltage value;
- ⑦ Current value;
- ⑧ Power value;
- ⑨ Timer ID: Timer state identification
- ⑩ Channel on/off logo;

The rear panel



Description:

- ① warning message
- ② The DIP switch of the AC power and its identification .
- ③ The description of the AC input voltage
- ④ AC power socket
- ⑤ The fan air vents
- ⑥ CE certification mark
- ⑦ USB interface and identification

Output check

The output check includes voltage check in condition of all channels with no load and current check in condition of short circuit so as to make sure that the instrument correctly responds to operation of the front panel.

1. Voltage output check

(1) Within no load, turn on the power, and make sure the setting current values of all channels are not zero;

(2) Check the voltage output of CH1/CH2

Turn on CH1/CH2 and the instrument work in CV mode. Check whether the voltage value could be changed from 0V to 32V.

2. Current output check

(1) Turn on the power.

(2) Check the current output of CH1/CH2

Use an insulated wire to connect the positive and negative terminal of CH1/CH2;

Turn off CH1 and CH2;

Revolve the knob to set the voltage value to 32V;

Revolve the knob to set the current value to 0A;

Adjust the current parameters to check whether the current value can be changed from 0A to 3.2A.

Chapter 2 Control panel operation

In this chapter, the function and operation of SPD3303S/3303D control panel will be introduced in detail to giving you an all-around understanding of it, which will eventually lead to easier work.

Brief introduction:

Output summary

CH1/CH2 independent output

CH3 independent output

Parallel output

Series output

Waveform display

Timer

Save and recall

2.1 Output summary

Summary

SPD3303S/3303D have three independent outputs, two of which are adjustable in voltage value and the other one includes selectable 2.5V, 3.3V or 5.0V

Independent/Parallel/Series

SPD3303S/3303D have three output modes: independent、parallel and series, which can be selected through the track switch on the front panel. In the independent mode, the output current and voltage are controlled respectively. In the parallel mode, the current value is twice that of the single channel. In the series mode, the voltage value is twice that of the single channel.

Constant voltage/current

In the constant current mode (independent or tracking mode), the current value is rated and controlled through the front panel. The indicator light displays red and the voltage value is under rating. It will return to constant voltage mode when the current value is under rating.

In the constant voltage mode, the current value is less than the setting value, and the voltage value is controlled through the front panel. The indicator light displays green and the current value is maintained at the set value. It will return to constant current mode when the voltage value is under rating.

2.2 CH1/CH2 Independent Output

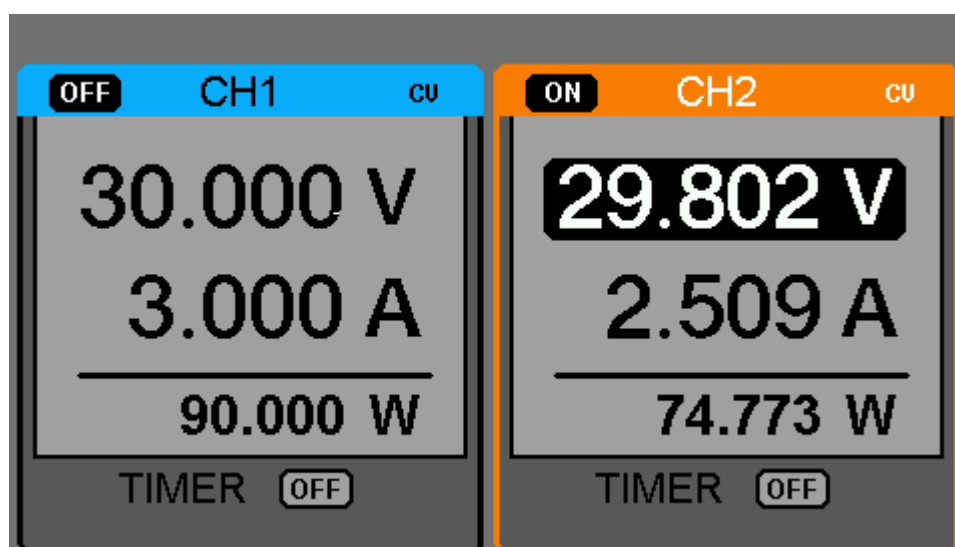
Instruction CH1 and CH2 are working in the independent mode, at the same time, they are insulated from the ground.



Output rating 0~30V/0~3A (max:32V, 3.2A)

Operation steps

1. Make sure that parallel/series mode is off.
2. Connect load to the positive and negative terminals of CH1/CH2.
3. Set voltage and current value of CH1/CH2: Firstly, move the cursor to select the wanted parameter(voltage,current), and then revolve the multi-function knob to change the corresponding parameter(you can press "FINE" to make accurate adjusting).
Coarse adjusting: 0.1V or 0.1A each step.
Fine adjusting: the least precision each step.
4. Open output : Press "ON/OFF" button to turn on the output, the corresponding indicator light gets lighted immediately and "CC" or "CV" is showed on the current interface.



2.3 CH3 Independent mode

Instruction

CH3 is independent from CH1 and CH2, and it works neither in parallel mode nor in series mode. Its voltage and current ratings are respectively 2.5V,3.3V,5V and 3A.



Output ratings 2.5V/3.3V/5V, 3A

Operation steps:

1. Connect the load to the positive and negative terminals of CH3 on the front panel.
2. Select the wanted voltage value by moving CH3 “DIP switch”.
3. Open output : Press “ON/OFF” button to turn on the output, the corresponding indicator light gets lighted immediately.

CV → CC

When the current value is higher than 3A, the overload indicator light turns red and the working mode turns to CC from CV

Note: “overload” does not mean abnormal operation.

2.4 CH1/CH2 Series mode

Instruction

In the series mode, CH1 and CH2 are linked internally into one channel which is controlled by CH1, and the output voltage value is twice compared with that of single channel.

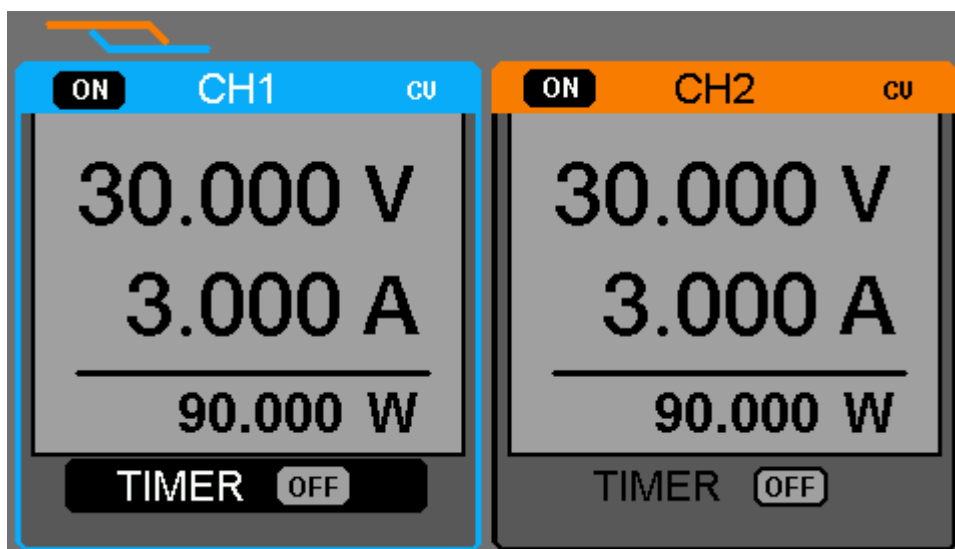


Output rating 0~60V/0~3A (max: 64V,3.2A)

Operation steps:

1. Press the “SER” button to start the Series mode, and the indicator light turns bright immediately;
2. Connect the load to the positive terminal of CH2 and the negative terminal of CH1;
3. Turn on CH2, and then adjust its current value by revolving the multi-function button to 3A. In the default setup, the instrument works in “Coarse”, you can turn to “Fine” by pressing “FINE” button;
Coarse: 0.1V or 0.1A each step;
Fine: the least precision each step;
4. Turn on CH1, and then set the output voltage/current value by revolving the multi-function knob;
5. Press “ON/OFF” button to open the output.

Note: You can identify the current working state “CC” or ”CV” by referring to indicator light of CH1/CH2.(red means CV, green means CC).



2.5 CH1/CH2 Parallel mode

Instruction In the parallel mode, CH1 and CH2 are linked internally into one channel which is controlled by CH1. Its output current value is twice as much as the single channel.

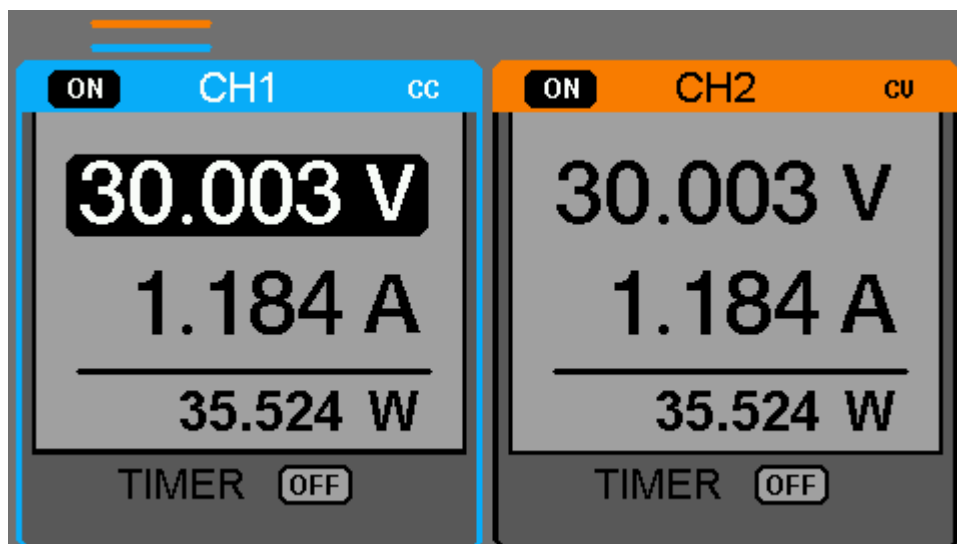


Output rating 0~30V/0~6A

Operation steps:

1. Press the “PAR” button to start Parallel mode, and the indicator light turns bright immediately;
2. Connect the load to the positive and negative terminal of CH1;
3. Turn on CH1, and then set the output voltage/current value by revolving the multi-function knob;
4. Press “ON/OFF” button to open the output.

Note: You can identify the current working state “CC” or “CV” by referring to indicator light of CH1/CH2.(red means CV, green means CC); In parallel mode, CH2 only works in CC mode.



2.6 Save and Recall

Save setup

Five group setups can be saved in memory. The contents of the setup file including:

Independent/series/parallel mode

Output voltage/current value

Timer setup

Operation steps

1. Set the state that you wanted;
2. Press “STORE” to enter Save/Recall interface;
3. Select “FILE CHOICE” by revolving the multi-function knob;
4. Select “OPEN CHOICE” by moving the cursor;
5. Move the cursor to “STORE”, and then press it to save the current setup.

Recall setup

Operation steps:

1. Press “STORE” to enter Save/Recall interface;
2. Select “FILE CHOICE” by revolving the multi-function knob;
3. Select “OPEN CHOICE” by moving the cursor;
4. Move the cursor to “RECALL”, and then press it to read the saved setup.

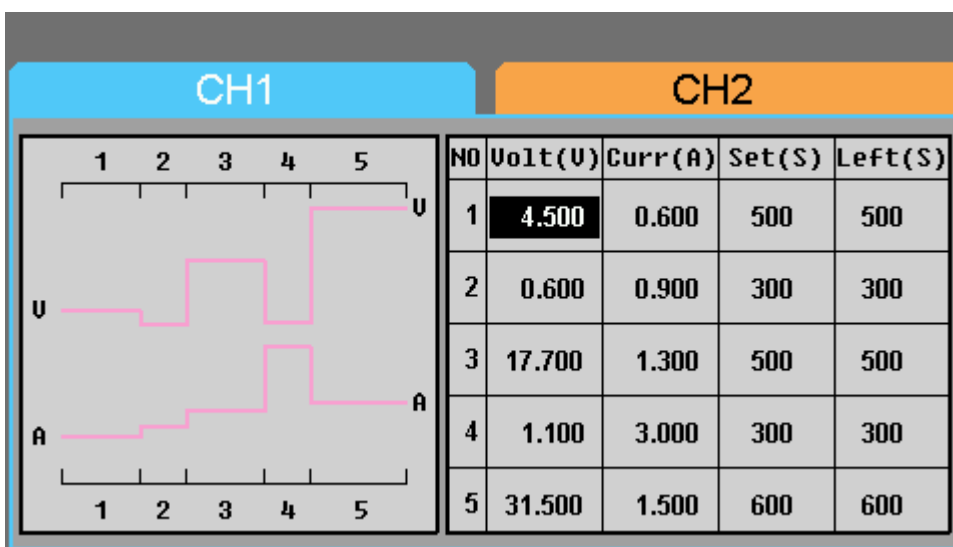
Note: if you want to delete the file that has been saved, please go on with step 3 above, select “DELETE” and then press it.

2.7 Timer

The timer works in the Independent mode, and can save five timing setups, each of which is independent from each other. You can set any voltage/current value within the range as you want. The timer supports consecutive output, and the longest time of each group is 10000s.

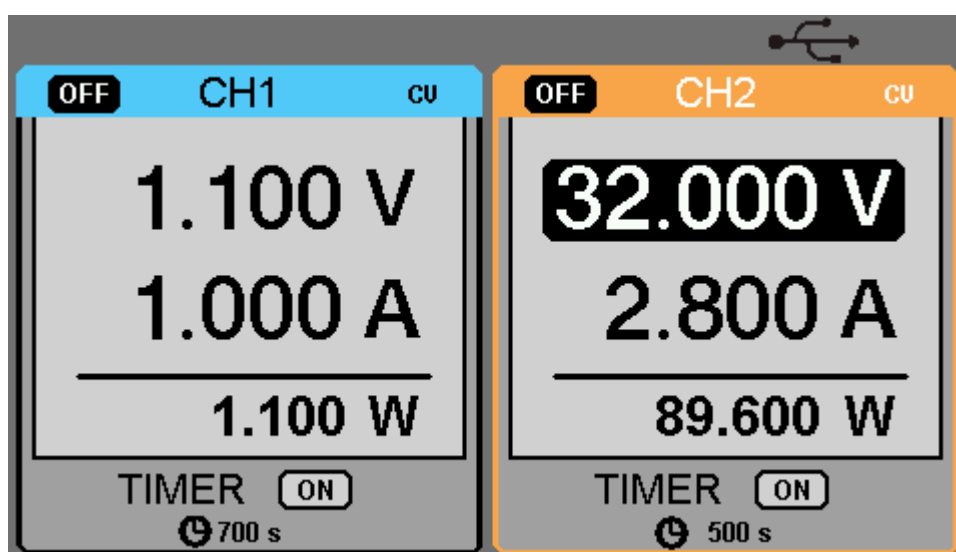
Setup steps:

1. Press CH1/CH2 to select the wanted channel;
2. Press “TIMER” to enter the Timer Setup interface, and the indicator light turns bright immediately;
3. Move the cursor to select the wanted parameter(voltage/current /time) by pressing the direction button;
4. Revolve the multi-function knob to set the corresponding value and then press it.
5. Press “Timer” again to exit current interface.



Start the Timer

1. Move cursor to “TIMER” menu by pressing the direction button;
2. Revolve the multi-function knob to make the Timer state to “ON”;
3. Press the knob to start the Timer.



Note: If you press the “TIMER” button when the timer is running, then you can observe the decreasing of the time, and the changes of the curve. The Timer will automatically turn off when the time reduces to 0.

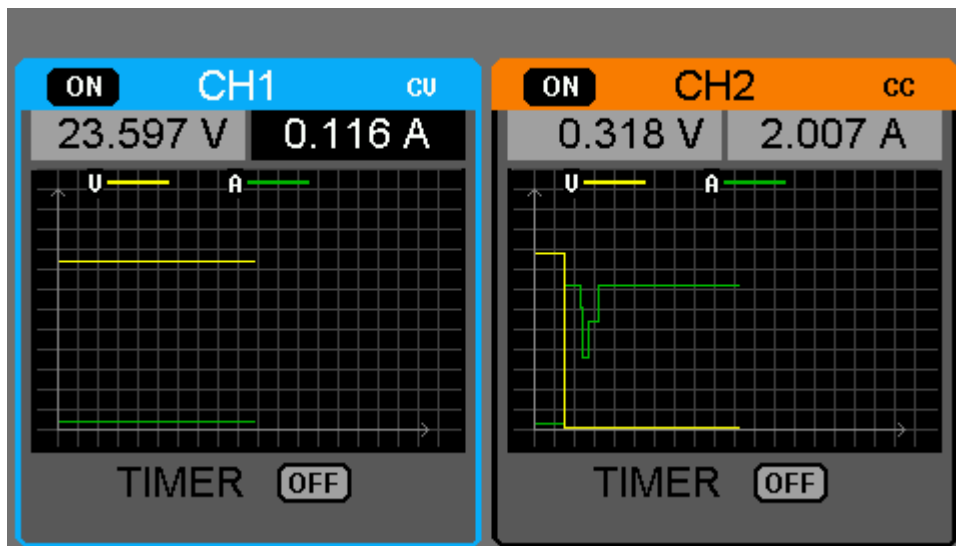
2.8 Waveform display

Display the changing of current voltage and current in the form of curve.

Operation steps:

1. Select CH1/CH2, and then set voltage/current parameter;
2. Press “WAVE” button to enter Waveform Display interface, and the indicator light turns bright immediately.
3. Press CH1/CH2 “ON/OFF” button to turn on CH1/CH2 channel, the corresponding indicator light turns bright immediately and you can observe the real-time changing of current voltage/current.

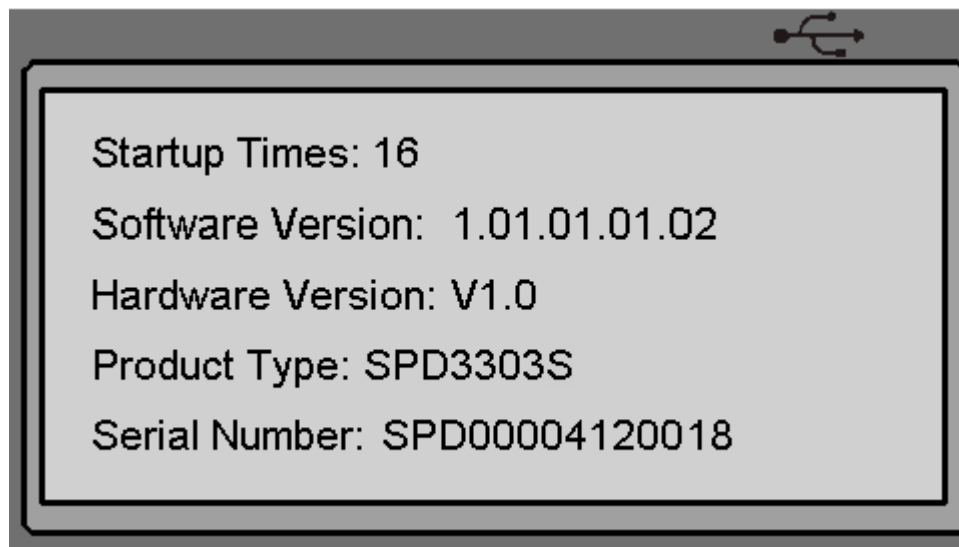
Waveform interface:



Note: Yellow line means voltage, green line means current, and axis of ordinate means voltage or current value (0~30V/0~3A).

2.9 Version information

Press “LOCK” button quickly to enter Version Information interface, which is shown below:



2.10 Upgrade firmware

The software of the instrument is upgraded with a fixed name file via PC management software with USBTMC. The upgrade method is below:

Upgrade in normal Interface

1. Open the EasyPower software after USB line having been connected perfectly, and make sure the instrument is connected with the software correctly.
2. Click Version and then choose Upgrade in the drop-down menu to enter the USB firmware upgrade dialogue. See figure 1:

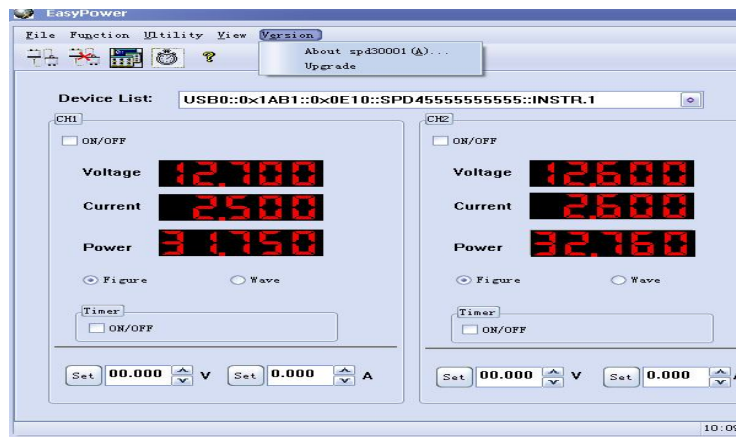



Figure 1

3. Figure 2 shows the firmware upgrade dialogue. Click file choosing icon , and then select the file to be upgraded which must have a postfix ugf.

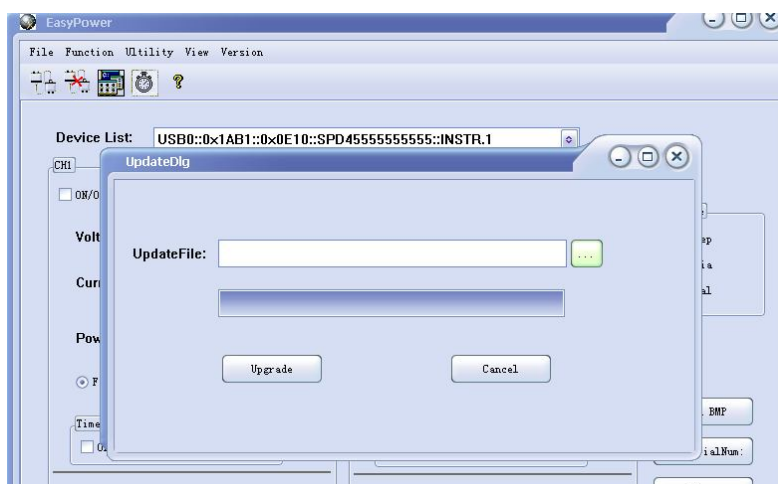


Figure 2

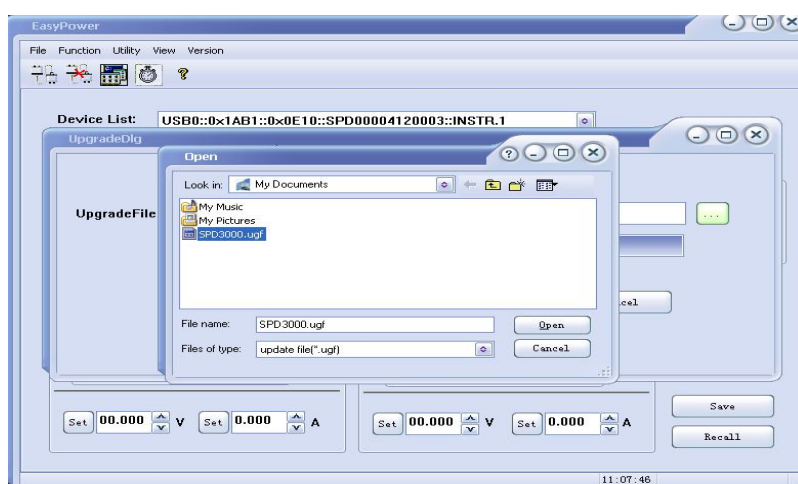


Figure 3

4. As it shows in figure 4, click Upgrade button to start upgrading. The upgrade is finished when the progress bar complete and the instrument will run the version after upgrade.



Figure 4

Upgrade Via Guide Procedure

Upgrade via guide procedure also can be used if the method above is failed.

Specific steps are below:

1. Press the knob before powering on the instrument, and the turn on the instrument and it will enter the guide procedure mode.
2. After enter the guide procedure mode, the upgrade method is the same as the first one.

Chapter 3 Remote control

The SCPI Commands are used to perform remote control through USBTMC.

Connect the USB device on the rear panel to computer which has been installed with EasyPower software or NI (Measurement & Automation) .

3.1 Command list

1. *IDN?
2. *SAV
3. *RCL
4. INSTrument {CH1|CH2}
5. INSTrument ?
6. MEASure:CURRent?
7. MEASure:VOLTage?
8. MEASure:POWER?
9. [SOURce:]CURRent <current>
10. [SOURce:]CURRent ?
11. [SOURce:]VOLTage <volt>
12. [SOURce:] VOLTage?
13. OUTPut
14. OUTPut:TRACK
15. OUTPut:WAVE
16. TIMEr:SET
17. TIMEr:SET?
18. TIMEr
19. SYSTem:ERRor?
20. SYSTem:VERSion?
21. SYSTem: STATus?

3.2 Command description

1. *IDN?

Command format	*IDN?
Description	Query the manufacturer, product type, series NO. and software version.
Return Info	Manufacturer, product type, series NO., software version.
Example	Siglent, SPD3303S, SPD00001130025, 1.01.01.02.

2. *SAV

Command format	*SAV <name>
Description	Save current state in nonvolatile memory with the specified name.
Example	*SAV 1

3. *RCL

Command format	*RCL <name>
Description	Recall state that had been saved from nonvolatile memory.
Example	*RCL 1

4. INSTRument

Command format	INSTRument <CH1 CH2>
Description	Select the channel that will be operated.
Example	INSTRument CH1

Command format	INSTRument?
Description	Query the current operating channel
Example	INSTRument?
Return Info	CH1

5. MEASure

Command format	MEASure: CURRent? < CH1 CH2>
Description	Query current value for specified channel, if there is no specified channel, query the current channel.
Example	MEASure: CURRent? CH1
Return Info	3.000

Command format	MEASure: VOLTage? < CH1 CH2>
Description	Query voltage value for specified channel, if there is no specified channel, query the current channel.
Example	MEASure: VOLTage? CH1
Return Info	30.000

Command format	MEASure: POWER? < CH1 CH2>
Description	Query power value for specified channel, if there is no specified channel, query the current channel.
Example	MEASure: POWER? CH1
Return Info	90.000

6. SOURce

Command format <SOURce:>CURRent <value>
<SOURce>:={CH1 | CH2}

Description Set current value of the selected channel

Example CH1:CURRent 0.5

Command format <SOURce>: CURRent?
<SOURce>:={CH1 | CH2}

Description Query the current value of the selected channel.

Example CH1: CURRent?

Return Info 0.500

Command format <SOURce>: VOLTage <value>
<SOURce>:={CH1 | CH2}

Description Set voltage value of the selected channel

Example CH1: VOLTage 25

Command format <SOURce>:CURRent?
<SOURce>:={CH1 | CH2}

Description Query the voltage value of the selected channel.

Example CH1: VOLTage?

Return Info 25.000

7. OUTPut

Command format OUTPut <SOURce>, <state>
 <SOURce>:={CH1 | CH2}; <state>:={ON | OFF}

Description Turn on/off the specified channel.

Example OUTPut CH1, ON

Command format OUTPut: TRACK <NR1>
 <NR1>:={0[Independent] | 1[Series] | 2[Parallel]}

Description Select operation mode

Example OUTPut: TRACK 0

Command format OUTPut: WAVE<SOURce>, <state>
 <SOURce>:={CH1 | CH2}; <state>:={ON | OFF}

Description Turn on/off the Waveform Display function of specified channel.

Example OUTPut: WAVE CH1, ON

8. TIMER

Command format TIMER: SET <SOURce>, <secnum>, <volt>, <curr>, <time>
 <SOURce>:={CH1 | CH2}; < secnum >;=1 to 5;

Description Set timing parameters of specified channel

Example TIMER: SET CH1, 2, 3, 0.5, 2

Command format `TIMER: SET? <SOURce>, <secnum>`
`<SOURce>:={CH1 | CH2}; < secnum >;=1 to 5;`

Description Query the voltage/current/time parameters of specified group of specified channel.

Example `TIMER: SET? CH1, 2`

Return Info `3, 0.5, 2`

Command format `TIMER <SOURce>, <state>`
`<SOURce>:={CH1 | CH2}; < state >;={ON | OFF};`

Description Turn on/off Timer function of specified channel

Instruction The command works effectively only when <secnum> starts from 1.

Example `TIMER CH1, ON`

9. **SYSTEM**

Command format `SYSTEM: ERRor?`

Description Query the error code and the information of the equipment.

Command format `SYSTEM: VERSion?`

Description Query the software version of the equipment.

Example `SYSTEM: VERSion?`

Return Info `1.01.01.02`

Command format SYSTem: STATus?

Description Query the current working state of the equipment.

Instruction The return info is Hexadecimal format, but the actual state is binary , so you must change the return info into a binary. The state correspondence relationship is as follow.

Example SYSTem: STATus?

Return info 0x0224

Bit NO.	Corresponding state
0	0: CH1 CV mode; 1: CH1 CC mode
1	0: CH2 CV mode; 1: CH2 CC mode
2,3	01: Independent mode; 10: Parallel mode 11: Series mode
4	0: CH1 OFF 1: CH1 ON
5	0: CH2 OFF 1: CH2 ON
6	0: TIMER1 OFF 1: TIMER1 ON
7	0: TIMER2 OFF 1: TIMER2 ON
8	0: CH1 digital display; 1: CH1 waveform display
9	0: CH2 digital display; 1: CH2 waveform display

Chapter 4 Specification

Test condition: Heat for 30 minutes, temperature between +20°C ~ +30°C.

Output rating	CH1/CH2 independent	0~32V , 0 ~3.2A	
	CH1/CH2 series	0~64V , 0 ~3.2A	
	CH1/CH2 parallel	0~32V , 0 ~6.4A	
	CH3	2.5V/3.3V/5.0V , 0~3.2A	
Constant Voltage Mode	Voltage coefficient	≤0.01%+3mV	
	Load coefficient	≤0.01%+3mV(rating current ≤ 3A) ≤0.02%+5mV(rating current > 3A)	
	Ripple and noise	≤2mVrms (5Hz ~ 1MHz)	
	Recover time	≤100μs(50% load change ,min load 0.5A)	
	Temperature coefficient	≤300ppm/°C	
Constant Current Mode	Power coefficient	≤0.2%+3mA	
	Load coefficient	≤0.2%+3mA	
	Ripple and noise	≤3mA rms	
CH3	Power coefficient	≤5mV	
	Load coefficient	≤15mV	
	Ripple and noise	≤2mVrms (5Hz ~ 1MHz)	
Tracking operation	Track error	≤0.5%+10mV of Master(No Load)	
	Parallel coefficient	Line: ≤0.01%+3mV Load: ≤0.01%+3mV(rating current ≤3A) ≤0.02%+5mV(rating current >3A)	
	Series coefficient	Line: ≤ 0.01%+5mV Load: ≤ 300mV	
Resolution	Voltage	SPD3303D: 10mV	SPD3303S: 1mV
	Current	SPD3303D: 10mA	SPD3303S: 1mA
Precision	Ammeter	3.2A full scale, 4 digits 0.4" LED display	
	Voltmeter	32V full scale, 5 digits 0.4" LED display	
	Set precision	SPD3303S: Voltage: ± (0.03% of reading + 10mV) Current: ± (0.3% of reading + 10mA) SPD3303D Voltage: ± (0.5% of reading + 1 digital) Current: ± (0.5% of reading + 1 digital)	
	Read precision	SPD3303S: Voltage: ± (0.03% of reading + 10mV) Current: ± (0.3% of reading + 10mA) SPD3303D Voltage: ± (0.5% of reading + 1 digital) Current: ± (0.5% of reading + 1 digital)	

Insulation	Between base and terminal	20M Ω or above (DC 500V)
	Between base and AC power cord	30M Ω or above (DC 500V)
Operating environment	Indoor	
	Altitude	≤ 2000 m
	Environment temperature	0 ~ 40 $^{\circ}$ C
	Comparative humidity	80%
	Installation level	II
	Pollution level	2
Storage environment	Environment temperature	-10 ~ 70 $^{\circ}$ C
	Comparative humidity	$\leq 70\%$
Power supply	AC 100V/120V/220V/230V $\pm 10\%$, 50/60HZ	
Volume	275mm x 225mm x 136mm	
Weight	8kg	

Chapter 5 Troubleshooting

Question 1: what to do if there occurs a short circuit on output terminal?

Answer1: There are over current protection and short circuit protection inside the power, so current will be controlled in safety range.

Question 2: Is it abnormal that the CH3 overload indicator is lit ?

Answer 2: No, that only means the current value reaches 3A, which is the maximum value within its range, and now power supply can be used continuously with the suggestion that decrease the output load.

Question 3: Is it normal that in the series mode, voltage and current value of a channel is respective 0V and not 0A, while that of another channel is both not 0?

Answer 3: Yes, because when current output load is higher than the limited current value, the working mode turns to CC from CV.

Question 4: How to deal with the upgrade failed?

Answer 4: please do it again.

Question 5: why the practical value is not the same with the set value (over performance standard) and even changes slowly on startup?

Answer 5: It's normal. On startup, components inside the instrument are in the process of getting stable, readings will be stable about 30 minutes later.

Question 6: what if the circuit air switch turns off automatically when power on?

Answer 6: First of all, make sure whether the rating of the air switch is proper or not (For instance: the rating of air switch B and C should be respectively over 16A and 10A). If the failure still exists beyond the reason, check if there is a short circuit, or return it to the factory to have it repaired by qualified personnel.

Contact SIGLENT

MTR Add: 3/F, Building 4, Antongda Industrial Zone, 3rd Liuxian
Road, 68 District, Baoan District, Shenzhen, P.R. CHINA

Tel: +86-755-36615186

E-mail: sales@siglent.com

<http://www.siglent.com>